

Sire and Dam Summary / APRIL 2015

# Wagyu Breeding Guide



*Build your Herd with Confidence*



---

# Welcome to our first Wagyu Breeding Guide



**We are delighted to present the Australian Wagyu Association's first Wagyu Breeding Guide.**

This 2015 First Edition will assist Wagyu breeders to better understand the wide range of Wagyu Fullblood sires and dams used in Australia and their performance capabilities. Both Black and Red Wagyu are included. All rankings are based on the new Wagyu EBVs and Fullblood Terminal Index using abattoir carcass results.

A key goal of our R&D program has been to identify new Australian bred sires with higher performance than their forebears. I am delighted to see these sires emerging in this Breeding Guide as they form the foundation for genetic improvement.

The results supporting the positions of some sires in the Australian national Wagyu herd now have extensive carcass data support and so high EBV accuracy.

Others will increase their accuracy and may change their ranking as more data is added and we urge all producers, feeders and processors to contribute.

The Wagyu Collaborative Genetics Research Project has provided the carcass data used in this analysis. Our thanks to Meat & Livestock Australia for its joint funding, to AGBU and ABRI for their outstanding scientific contribution, and to all supporting data contributors who have so generously shared their herd information.

We look forward to your feedback on this first Wagyu Breeding Guide as we believe it will add real value to your Wagyu beef business.

Warmest regards,

[Scott de Bruin](#) - President  
[Australian Wagyu Association / April 2015](#)



# CONTENTS

Introducing the Wagyu Breeding Guide	4
Advances in Wagyu Breeding Technology	5
Breeding Guide Tables and How They Work	7
What Do The Numbers Mean?	8
Black Wagyu	12
Black Wagyu - Sires Sorted Alphabetically	12
Black Wagyu - Sires Ranked by Fullblood Terminal Index	15
Black Wagyu - Sires Ranked by Marble Score	18
Black Wagyu - Sires Ranked by Carcase Weight	21
Red Wagyu Sires	24
Red Wagyu - Sires Sorted Alphabetically	24
Red Wagyu - Sires Ranked by Fullblood Terminal Index	24
Red Wagyu - Sires Ranked by Marble Score	24
Red Wagyu - Sires Ranked by Carcase Weight	24
Black Wagyu - Top 100 Dams Ranked by Fullblood Terminal Index	25
Black Wagyu - Top 100 Dams Ranked by Marble Score	27
Black Wagyu - Top 100 Dams Ranked by Carcase Weight	30
AI Sires With Semen Available	33
How to Use the New Wagyu Carcase EBVs & Fullblood Terminal Index to Breed for Commercial Production Targets	35
Major Wagyu Prefectural Bloodlines	36
Our Key Technology Partner in the Creation of New Generation Wagyu Genetic Analysis	37
Membership Delivers Real Value	38



# INTRODUCING The Wagyu Breeding Guide

**Sire and dam selection is a key decision for all Wagyu breeders, but it can also be complex.**

This Breeding Guide will help simplify the selection process for you. It provides a listing of bulls and females from Australia with substantial carcass data recorded. Estimated Breeding Values (EBVs) are used to organise bulls by the most common breeding objectives. Wagyu breeders can select bulls and dams from the Wagyu Breeding Guide with confidence that the information is independent and backed by strong science from the Animal Genetics & Breeding Unit (AGBU) and the Agricultural Business Research Institute (ABRI), based at the University of New England, Armidale, NSW.

All tables also include each bull and/or dam's Fullblood Terminal Index (FTI), developed specifically for Wagyu by AGBU to compare the animal's genetic contribution to their individual slaughter progeny's commercial value. The FTI formula reflects the value Wagyu breeders place on carcass weight and marbling. Leading bulls that make the Breeding Guide rank highly for slaughter progeny profitability. For feeder producers, 200 and 400 Day Weight EBVs can help in identify early growth that might be employed to enhance returns.

Future Indexes will provide a more holistic self-replacing herd outcome including traits such as fertility and maternal capabilities. A Feeder Producer Profitability listing is also under discussion.

This Guide enables you to apply your own priorities and select appropriate sire and dam breeding for your herd. Where your selection of seedstock genetics is unavailable for purchase, a review of pedigrees will provide a direction for alternative

selection. An AI Sire listing on Page 33 identifies those bulls in the Breeding Guide with semen available.

## > What's most important to you?

Using this guide with the accompanying new EBVs is simple. First, identify your highest breeding priority, such as:

- Improving early growth for feeder sale profit
- Boosting marbling;
- Improving carcass weight;
- Selecting the most reliable proven bulls; or
- Maximising slaughter progeny returns.

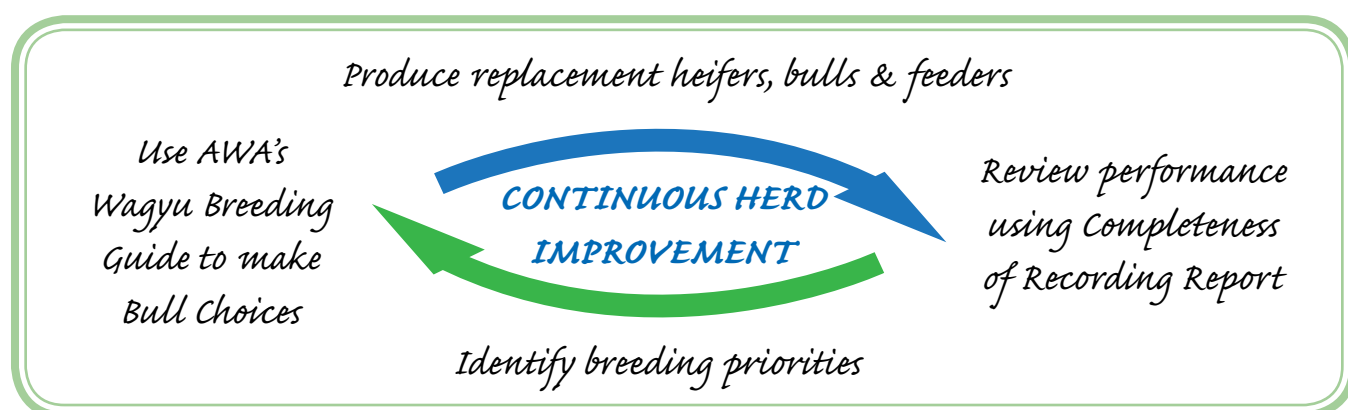
Go to the Growth EBVs or Table that meet your highest breeding objective and select with confidence.

An electronic, sortable version of the Breeding Guide sire and dam lists are available on [www.wagyu.org.au](http://www.wagyu.org.au) – Breeding Wagyu. For full access to all new Wagyu EBVs and the Fullblood Terminal Index covering the entire Australian Wagyu Association recorded animal population, go to [www.wagyu.org.au](http://www.wagyu.org.au) - Animal Search - EBV Enquiry.

## > Monitoring your herd's genetic progress

The Wagyu BREEDPLAN Completeness of Recording Report uses EBVs and Indexes produced from data collected through your herd recording to let you track the genetic progress of your herd on key traits. With the Completeness of Recording Report you can monitor the success of your breeding choices and benchmark your herd against the national Wagyu herd.

This Report is available to all Wagyu BREEDPLAN enrolled members. Contact our Technical Officer, Alex McDonald on 02 6773 2472 or mobile 0412 811 123 email: [alex@sbts.une.edu.au](mailto:alex@sbts.une.edu.au) to get a report for your herd.



# Advances in Wagyu Breeding Technology



## With the rapid growth in demand for elite Wagyu beef in Australia

and globally, production is expanding rapidly, with major opportunities available for producers and processors. Well described, high performing Wagyu genetics are in high demand. In response, Australian Wagyu seedstock registrations doubled in 2013 and increased a further 14% to 6764 in 2014. All fullblood seedstock animals are DNA parent verified to ensure accurate pedigree.

The Australian Wagyu Association has used world renowned BREEDPLAN genetic analysis technology since 1992, producing Estimated Breeding Values (EBVs) to describe the economically important traits in Wagyu production, including fertility, maternal, growth and carcass (see 'What Do The Numbers Mean?' on page 8)

Further improvement in the Wagyu BREEDPLAN technology has been undertaken over the past two years through a Wagyu Collaborative Genetics Research Project. With joint funding from Meat and Livestock Australia, Stage 1 of the project was conducted with the following aims:

- To collect carcass and genotype data on 2-3000 Wagyu fullblood and crossbred animals slaughtered at commercial abattoirs including data collected using the Japanese Digital Camera
- To calculate the heritability of the traits measured including the Camera Image Analysis traits and the genetic relationships with Australian industry-standard assessments such as the AUS-MEAT Marbling Score.
- If the traits are heritable and have economic value to investigate the calculation of Estimated Breeding Values for those traits and possible new Indexes for the Wagyu breed.
- To investigate whether genomic data can be used to estimate genomic relationships to provide or augment pedigree data on these animals

### > Stage 1 Outcomes:

- Carcass data including carcass weight, AUS-MEAT marbling score, P8 rump fat depth, and up to 11 Camera Marbling traits was collected on 2215 carcasses.
- The data was analysed by the Animal Genetics and Breeding Unit (AGBU) with heritabilities and genetic correlations between traits calculated.
- The heritability of key traits was generally high such as carcass weight (0.47), AUS-MEAT Marble Score (0.52), Camera Marbling Percentage (0.35), Camera Fineness Index (0.50) and Camera Eye Muscle Area (0.62).
- The genetic correlation between the marbling traits was high.
- All carcass weight, P8 fat and Rib Eye Area Measurements are now incorporated in the standard Wagyu analysis increasing the accuracy of the EBVs for these traits.
- New EBVs for Marble Score, Camera Marbling Percentage and Camera Fineness Index are now calculated by the Animal Genetics and Breeding Unit in a multi-trait model
- Two of these EBVs, Marbling Score and Marbling Fineness are published for all animals in the analysis. The EBV for Camera Marbling Percentage (CCMP) is not published but contributes to the Marble Score EBV. The current AUS-MEAT marble score assessment is unable to measure the highest levels of fullblood Wagyu marbling, these CCMP adjustments are the first step to overcoming this difficulty.
- A new Wagyu Feedlot Terminal Index is calculated for animals in the new analysis, utilising the Marble Score and Carcass Weight EBVs, producing indexes for 570 Fullblood sires and 3,178 Fullblood females.

These new EBVs and Index were first released in March 2015 enabling more accurate identification, selection and use of high performance Wagyu genetics, and providing a foundation for increased genetic gain. Data collection is ongoing and EBVs and the new index are updated monthly and reported on the AWA website. Inevitably, ranking changes reflect progress in those herds contributing data. Future balance across the Australian Wagyu national herd can only be achieved by contributions especially of carcase data from Wagyu breeders.

Stage 2 will develop genomic tests from DNA samples to increase the accuracy of EBVs for young sires and heifers. It is also hoped that this same technology will be used for tests to predict commercial feedlot profitability of

commercial Wagyu animals, increasing the efficiency of feeding regimes.

Such powerful genetic tools will allow Wagyu breeders to make genetic improvements in their herds. Wagyu sires and dams demonstrating high performance will rapidly increase in value as a direct result of their proven value to the supply chain.

### Contributing Members

A total of 30 members have generously contributed AUS-MEAT carcase and/or Digital Carcase Camera plus associated live weights for inclusion in the new Wagyu Genetic Analysis, with a substantial portion contributed by AACo:

Herd	AUS-MEAT data	Camera Marbling data
Duo Enterprises	66	60
Edgefern Wagyu	17	8
Falls & Sons	16	4
Fung	32	32
Ginjo Wagyu	53	50
Greenhills Wagyu	166	139
Island Wagyu	64	0
Irongate Wagyu	15	0
Kalanga Wagyu	40	25
Kinto	83	79
Kuro Kin Wagyu	116	57
Leichhardt Wagyu	60	0
Longford Wagyu	243	41
Macquarie Wagyu	858	242
Mazda Wagyu	39	0
Mayura Wagyu	964	800
Rosevale Wagyu	56	0
Sanjoliney Wagyu	123	119
Shadai Farms Wagyu	25	25
Sher Wagyu	118	0
Sherraloy	10	4
Strathdale Wagyu	63	62
Sunnyside Wagyu	24	9
Tarcoola	15	0
Trig Farm Wagyu	31	0
Tumbledown Wagyu	82	56
Yambacoon Wagyu	21	21
Yokozuna Wagyu	32	30
Wagyu Genetics Wagyu	13	0
Westholme Wagyu	462	410
<b>TOTALS</b>	<b>3907</b>	<b>2273</b>

All members are invited and encouraged to enrol in Wagyu BREEDPLAN and contribute performance data for registered males and females and their progeny.

# Breeding Guide Tables and How They Work

Animal Name and Identification

Animal Supporting Traits: EBVs and Accuracy

Animal Full Blood Terminal Index

Black Wagyu Sire Sorted Alphabetically		MARBLE SCORE		MARBLE FINENESS (%)		CARCASE WEIGHT		EYE MUSCLE AREA (SQ. CM)		RUMP FAT (MM)		FB TERM INDX
ANIMAL NAME	ANIMAL ID	EBV	Acc.	EBV	Acc.	EBV	Acc.	EBV	Acc.	EBV	Acc.	
		BALD RIDGE ITOZURUDOI B205	CCCFB0205	0.0	79	0.9	66	31	86	1.6	80	
BAR R SANJIRO 4P (IMP USA)	IMUFY5663	0.6	76	2.0	73	4	78	4.9	66	-1.7	72	\$144

## The Sire and Dam Lists

The sires and dams listed in the Breeding Guide have been selected based on the following criteria:

1. Minimum accuracy of 50% for Marble Score EBV
2. Minimum accuracy of 50% for Carcase Weight EBV
3. Minimum 5 carcase progeny for sires
4. Minimum 1 carcase progeny for dams

Individual Wagyu sires and dams listed on the AWA website database may have higher Fullblood Terminal Index values, but are not included in this Breeding Guide due to EBVs with accuracies of less than 50%, or fewer than the minimum carcase progeny required for publication in this Breeding Guide.

## Influence of Differing Australian Production Systems

Unlike mainstream Japanese Wagyu production, where Days on Feed (DOF) and Days of Age (DOA) at slaughter are nationally consistent, Australian Wagyu DOF systems vary from organic grassfed, to paddock-

supplemented, to relatively short-fed, and then to full Japanese-equivalent regimes, with numerous intermediate variations, and with similarly varying ages (DOA) at harvest.

While AWA recognises there are worthwhile DOF/DOA 'targets' for improved production efficiency, these 'First Edition' Wagyu EBVs and Index are not based on any specific production system, to enable published individual animal values to reflect as close to a 'level playing field' as possible.

# What Do The Numbers Mean?

## Australian Wagyu Genetic Analysis

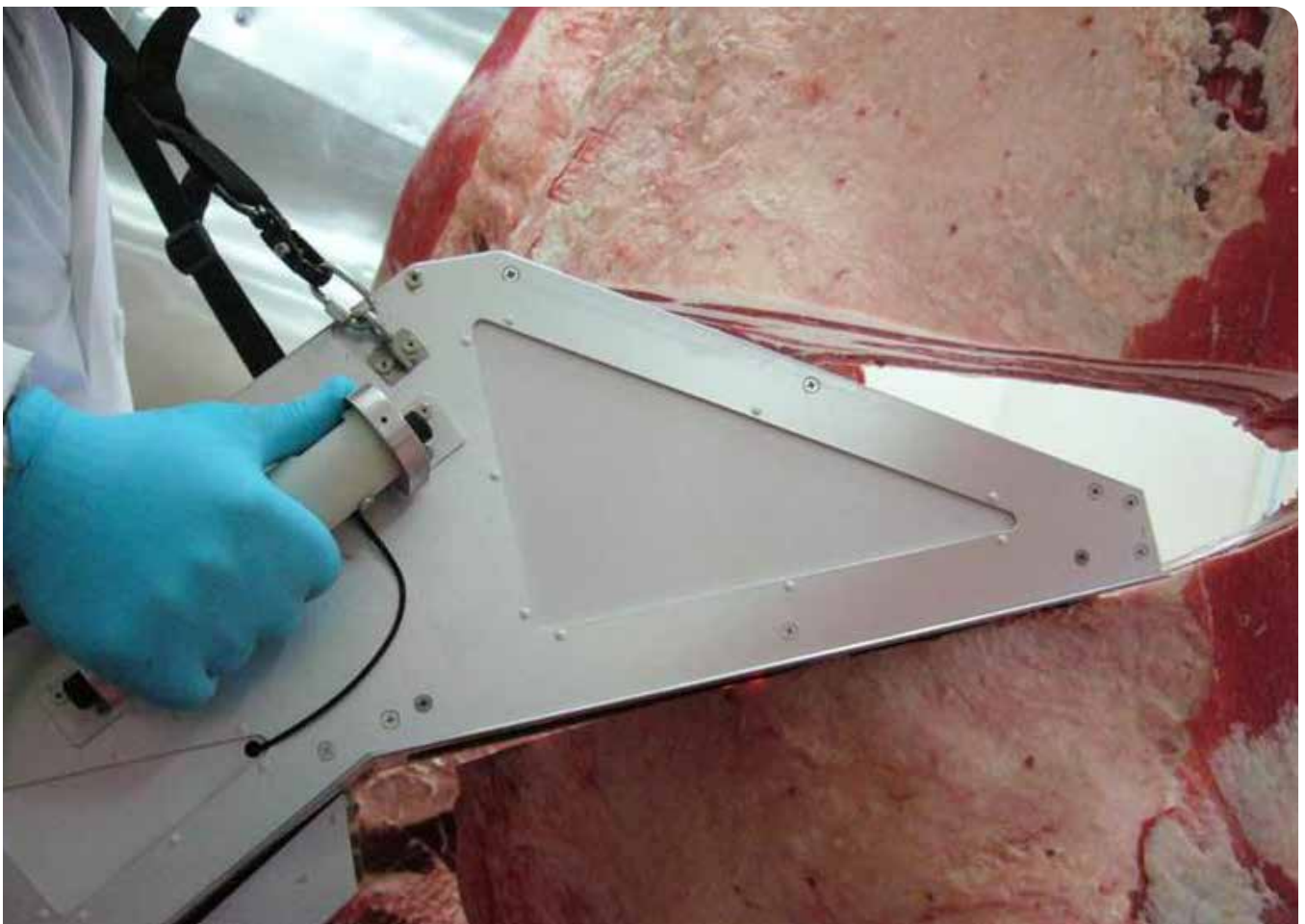
The Australian Wagyu BREEDPLAN analysis provides the most thorough and accurate assessment of the Wagyu genetics available outside of Japan. The analysis includes 19,837 calves that have at least a weaning (200 day) weight recorded. There are 15,922 animals with birth weights and 16,518 with 400 day weights. Carcase data includes 3,863 carcase weights, 2,514 carcase EMA, 3,907 carcase AUS-MEAT marble scores, 2,273 camera marbling percent measures and 1,950 camera fineness index measures. The analysis includes 44,575 dams and 4,327 sires.

While this comprehensive dataset provide a good profile of Australian Wagyu genetics, more data will increase

the power of this analysis. The Australian Wagyu Association stresses that data contribution represents a valuable herd improvement opportunity available to all members, who may join Wagyu BREEDPLAN at any time. Ensure your genetics are represented - contribute your data.

## Estimated Breeding Values (EBVs)

Estimated Breeding Value is the estimated genetic merit of an animal for each recorded production trait. EBVs reflect the difference that can be expected in an animal's performance relative to the breed baseline for each trait. On average, half of this difference will be passed on to the animal's progeny.



*Japanese Digital Image Camera*



---

## Accuracy

An accuracy value is presented with every EBV and gives an indication of the amount of information that has been used in the calculation of that EBV. The higher the accuracy the lower the likelihood of change in the animal's EBV as more information is analysed for that animal or its relatives.

## Accuracy Range Interpretation

LESS THAN 50% = Low accuracy and should be considered a preliminary estimate. The EBV could change substantially as more performance information becomes available.

50 - 74% = Medium accuracy, usually based on the animal's own records and pedigree.

75 - 90% = Medium-high accuracy and usually includes some progeny information. Becoming a more reliable indicator of the animal's value as a parent.

90% AND ABOVE = High accuracy. It is unlikely that the EBV will change much with the addition of more progeny data.

## Carcase EBVs and Index

The following EBVs and Fullblood Terminal Index are provided in this Breeding Guide due to the high priority placed on carcase traits in the Wagyu breed.

**Carcase Weight EBV** (kg) estimates the genetic difference in a standard AUS-MEAT carcase weight at an age of 750 days. This is an AGBU adjusted Days of Age value that allows animals to be compared on a "level playing field". More positive EBVs indicate heavier carcasses at a given age.

**Eye Muscle Area EBV** (cm<sup>2</sup>) estimates genetic differences in eye muscle area at the 12/13th rib site of a 400kg carcase. Measurements taken at other quartering sites such as the 4th/5th rib or the 10th/11th rib are adjusted to the 12th/13th measurement. AUS-

MEAT assessed and Japanese digital image camera measured Eye Muscle Areas of carcasses contribute to this EBV. More positive EBVs indicate larger eye muscle area and therefore higher retail beef yields.

**Rump Fat EBV** (mm) estimates the genetic differences in fat depth at the P8 site of a 400kg carcase. AUS-MEAT measurements of P8 fat depth on carcasses contribute to this EBV. More positive EBVs indicate more subcutaneous fat and earlier maturity.

**Marble Score EBV** (AUS-MEAT Marble Score) estimates the genetic differences in Marble Score in a 400kg carcase. AUS-MEAT marble scores and Japanese digital image camera measured marbling percentage in carcasses contribute to this EBV. A higher value indicates that the animal has genes which produce higher marbling scores in the carcase.

**Marble Fineness EBV** (Marbling Fineness Index) is an estimate of the genetic difference in the Marbling Fineness Index (degree of fineness of marbling fat) as measured by the Japanese digital image camera. Sires with higher EBVs are expected to produce progeny with higher levels of marbling fineness.

## Wagyu Fullblood Terminal Index

The Wagyu Fullblood Terminal Index (FTI) utilises the Carcase Weight EBV and the Marble Score EBV, being the traits which determine the price of Wagyu carcasses.

In producing the FTI and EBVs, AGBU has adjusted data to indicate the relative performance of every animal on a 'level playing field'. There are no inequalities or discrepancies resulting from variation in key production parameters such as Days on Feed (DOF) or Days of Age (DOA) at slaughter.

The assumptions are a 420kg carcase, a base price of \$8.50/kg carcase weight (a value of \$8.50/kg carcase weight is used as the current price of a carcase with a marble score of 7) and an increase/decrease in value of the carcase of \$1 per kilogram per marbling score. It is

assumed that only half of the difference in EBVs will be passed on to the progeny because only half the genes come from the sire.

If a sire has a Carcase Weight EBV of 0 and a Marble Score EBV of +0.0 it will have an Index of zero.

If a sire has a carcase weight EBV of +20 and a Marble Score EBV of +2.0 the value of the additional 10kg of carcase weight is \$85 (10kg @ \$8.50) and the value of one additional marble score is \$430 (430kg @ \$1). The sire will have an Index of +\$515 (\$85 + \$430). The sire will add \$515 to the value of its progeny on average compared to a sire with a zero Index.

If a sire has a carcase weight EBV of -20 and a Marble Score EBV of -2.0 the reduction in value due to the reduced carcase weight will be -\$85 (-10kg @ \$8.50) and the reduction in value of the one less marble score will be -\$410 (410kg @ \$1) It will have an Index of -\$495 (-\$85 -\$410) The value of the progeny of this sire will be on average \$495 less than a sire with a zero Index.

## Additional EBVs available

The full set of Wagyu EBVs is available in the Australian Wagyu Association website [www.wagyu.org.au](http://www.wagyu.org.au) - Animal Search - EBV Enquiry. These include:

## Fertility and Birth EBVs

**Scrotal Size EBV** (cm) is an indicator of male fertility in regards to semen quality and quantity. Higher (positive) EBVs indicate higher fertility. There is also a small negative correlation with age of puberty in female progeny.

**Gestation Length EBV** (days) is based on AI records. Lower (negative) GL EBVs indicate shorter gestation lengths which generally relate to easier calving and increased growth after birth.

**Birth Weight EBV** (kg) is based on the measured birth weight of animals, adjusted for dam age. The lower the value the lighter the calf at birth and the lower the likelihood of a difficult birth. This is particularly important when selecting sires for use over heifers

## Growth EBVs

**200-Day Milk EBV** (kg) is an estimate of an animal's milking ability. For sires, this EBV is indicative of their daughter's milking ability as it affects the 200-day weight of their calves.

**200-Day Growth EBV** (kg) is calculated from the weight of animals taken between 80 and 300 days of age.



Values are adjusted to 200 days and for dam age. This EBV is the best single estimate of an animal's genetic merit for growth to early ages.

**400-Day Weight EBV** (kg) is calculated from the weight of progeny taken between 301 and 500 days of age, adjusted to 400 days and for dam age. This EBV is the best single estimate of an animal's genetic merit for yearling weight.

**600-Day Weight EBV** (kg) is calculated from the weight of progeny taken between 501 and 900 days of age, adjusted to 600 days and for dam age. This EBV is the best single estimate of an animal's genetic merit for growth beyond yearling age.

## Additional Carcase EBVs

**Rib Fat EBV** (mm) estimates the genetic differences in fat depth at the 12/13th rib in a 400kg dressed carcass. More positive EBVs indicate more subcutaneous fat and earlier maturity. AUS-MEAT Rib Fat measurements from slaughter animals contribute to this EBV.

**Retail Beef Yield Percent EBV** (%) This represents total (boned out) meat yield as a percentage of a 400kg dressed carcass. A more positive EBV indicates higher percentage yield for the 400kg carcass weight.



### Disclaimer

*The Estimated Breeding Values for Carcase Weight and Eye Muscle Area contained in this Sire Summary were compiled by the Agricultural Business Research Institute (ABRI) from data supplied by the breeder. Neither the Society nor the ABRI oversee or audit the collection of this data.*

*The Estimated Breeding Values for Marble Score and Marbling Fineness were calculated by the Animal Genetics and Breeding Unit from measurements taken on carcasses as part of the Wagyu Genetics Collaboration Research Project by staff skilled in the use of the Japanese digital camera.*

*The carcass data analysed by the Animal Genetics and Breeding Unit was predominantly from Fullblood feeders but also included crossbred animals ranging from F1 to Purebred. Dams were not identified for some progeny.*



## Black Wagyu Sire Sorted Alphabetically

ANIMAL NAME	ANIMAL ID	MARBLE SCORE		MARBLE FINENESS (%)		CARCASS WEIGHT		EYE MUSCLE AREA (SQ. CM)		RUMP FAT (MM)		FB TERM INDX
		EBV	Acc.	EBV	Acc.	EBV	Acc.	EBV	Acc.	EBV	Acc.	
BALD RIDGE ITOZURUDOI B205	CCCFB0205	0.2	83	1.9	69	31	86	1.3	80	0.5	80	\$174
BAR R SANJIRO 4P (IMP USA)	IMUFY5663	0.5	77	2.2	73	-1	78	4.3	67	-0.6	73	\$102
COATES TERUTANI X0099	CCOFX0099	0.9	77	5.1	70	24	73	-0.7	58	1.5	56	\$296
COBUNGRA 5002	898FA0002	0.2	82	2.5	78	22	77	5.8	72	-0.8	72	\$135
COBUNGRA 5013	898FA0013	-0.4	86	-1.2	83	17	81	8.8	78	1.7	78	-\$13
COBUNGRA 5085	898FA0085	0.5	76	1.6	74	32	71	3.9	68	2.1	69	\$243
DALLROSE ITOSHIGEFUJI B2	AMWFB0002	-0.2	74	2.2	67	39	68	1.6	58	0.0	64	\$123
DIAMOND BRAND ICHIRYUNO Z626	DBDFZ0626	1.2	88	2.0	70	29	86	5.2	83	2.6	83	\$386
DIAMOND BRAND ICHIRYUNO Z680	DBDFZ0680	0.2	82	-0.2	67	4	79	2.9	71	3.5	72	\$61
ECHIGO FARMS F B1001	ECHFB1001	-0.2	74	-2.3	61	23	78	0.8	66	0.4	58	\$53
EXCEL HIRAKITADOI A0009	EXLFA0009	-0.2	77	-3.7	73	-3	71	1.1	64	-0.6	57	-\$55
EXCEL SURUKIKU B0004	EXLFB0004	-0.7	80	-5.5	76	14	76	-0.1	64	0.8	55	-\$91
FUKUTSURU J068 (IMP JAP)	IMJFMJ068	0.5	94	3.8	89	-5	95	0.1	92	5.8	92	\$83
GINJO MARBLEMAX HIRANAMI B901	GINFB0901	0.7	77	0.0	64	32	80	-0.4	69	-0.3	53	\$286
GINJO MARBLEMAX Z285	GINFZ0285	0.6	72	0.4	69	11	72	-3.2	61	1.9	56	\$175
GOSHU FUKUMURA	GOSFB0377	0.6	61	2.0	58	-7	56	1.2	54	2.5	55	\$97
GOSHU FUKUNAGA	GOSFB0404	0.0	92	0.6	84	-5	91	3.5	87	4.3	89	-\$23
GOSHU FUKUTOMI	GOSFB0400	-1.3	92	1.6	84	-12	90	1.4	87	2.0	87	-\$319
GOSHU FUKUZAKI	GOSFC0457	-0.4	93	2.6	83	10	91	0.5	88	0.8	89	-\$42
GOSHU MICHITARO	GOSFU0083	0.8	79	3.1	75	-11	81	4.7	71	-0.6	75	\$119
GOSHU SANAGU	GOSFB0419	-1.1	88	-3.3	80	-15	86	7.1	78	-0.4	83	-\$292
GOSHU SANAKA	GOSFB0417	-0.9	86	-1.8	81	-21	83	4.0	77	1.1	79	-\$272
GOSHU SANAMI	GOSFB0410	0.3	93	-1.1	84	-19	92	4.7	88	-4.3	88	-\$19
GOSHU SANJO SANETOMI	GOSFB0390	-0.5	86	-1.8	77	-6	82	4.8	75	-0.4	76	-\$131
HAWKRIDGE AKIWAWA	ESKFU0005	0.1	76	0.4	65	29	75	-3.2	70	5.4	71	\$144
HIRASHIGETAYASU J2351 HONGEN (IMP JAP)	IMJFAJ2351	0.1	95	-2.6	89	25	97	0.3	96	-1.0	97	\$127
ITOMORITAKA J2703 HONGEN (IMP JAP)	IMJFAJ2703	-0.7	92	-3.8	82	24	96	1.6	93	1.4	95	-\$51
ITOSHIGEFUJI (IMP USA)	IMUFQTF147	-0.7	97	-2.6	95	34	97	-6.9	95	1.9	95	-\$8
ITOSHIGENAMI (IMP USA)	IMUFQTF148	2.0	97	1.4	95	3	97	1.8	96	1.6	96	\$434
ITOZURUDOI TF151 (IMP USA)	IMUFLTF151	0.5	94	3.9	91	20	95	1.1	93	0.8	94	\$191
KIKUTERUSHIGE (IMP USA)	IMUFMTF150	-0.8	93	0.3	88	-32	95	1.4	91	0.4	93	-\$299
KINTO MICHIFUKU V2085	KTOFV2085	-0.1	86	2.1	77	-3	84	2.4	68	1.7	56	-\$35
KINTO SHIKI Y5012	KTOFY5012	1.3	83	2.1	75	-10	80	1.5	69	0.9	60	\$226
KITATERUYASUDOI J2810 HONGEN (IMP JAP)	IMJFAJ2810	1.1	96	1.1	92	-10	98	1.2	97	-2.9	97	\$188
KITATSURUKIKU DOI (IMP JAP)	IMJFQ3161	-0.4	86	-3.4	78	-6	92	-1.1	86	1.2	90	-\$110
KURO KIN DM 100/4	KKWFB0364	0.4	84	1.7	82	18	81	-2.6	77	-1.4	78	\$160
KURO KIN DM100 D22	KKWFD0022	0.6	77	0.5	74	20	75	2.9	59	-0.8	69	\$215
KURO KIN ITOSHIGENAMI 15	KKWFB0326	0.6	77	0.2	73	22	76	-1.1	72	2.3	74	\$224
KURO KIN ITOSHIGENAMI D52	KKWFD0052	1.0	78	2.0	75	25	77	1.6	63	1.6	72	\$321
KURO KIN KATSUMI 4	KKWFA0868	0.6	75	1.3	67	-8	74	0.6	62	1.4	67	\$92
LISNAGARVEY KANEHANA B024	LISFB0024	0.1	73	-1.4	62	4	75	2.3	69	1.9	71	\$36
LONGFORD 004	LFDFY0004	2.0	84	3.7	72	-9	83	3.6	62	-0.1	70	\$378
LONGFORD 005	LFDFY0005	2.1	82	3.9	71	-8	78	3.3	58	-1.0	59	\$405
LONGFORD 464	LFDFW0464	-0.1	77	0.7	66	-4	74	0.4	54	2.1	56	-\$39
LONGFORD B8772	LFDFB8772	0.4	79	1.5	66	10	76	1.1	54	0.5	56	\$127
LONGFORD F X138	LFDFX0138	0.7	83	0.5	69	12	80	0.3	51	-1.0	53	\$198
LONGFORD F X180	LFDFX0180	-0.4	77	-1.8	65	7	74	1.3	57	-1.0	59	-\$55
LONGFORD ITOZURUDOI B558	LFDFZ0558	0.0	81	0.3	70	15	80	0.1	62	1.3	68	\$62

## Black Wagyu Sire Sorted Alphabetically

ANIMAL NAME	ANIMAL ID	MARBLE SCORE		MARBLE FINENESS (%)		CARCASE WEIGHT		EYE MUSCLE AREA (SQ. CM)		RUMP FAT (MM)		FB TERM INDX
		EBV	Acc.	EBV	Acc.	EBV	Acc.	EBV	Acc.	EBV	Acc.	
LONGFORD LFDB1193	LFDFZ1193	0.3	81	0.2	71	18	79	-1.0	57	1.0	58	\$140
LONGFORD LFDB1194	LFDFZ1194	-0.2	82	-1.0	73	2	80	-1.1	60	1.5	58	-\$34
LONGFORD LFDB1195	LFDFZ1195	0.1	84	-0.4	73	18	82	-1.0	57	1.0	58	\$96
LONGFORD LFDB1200	LFDFZ1200	0.1	73	0.4	66	5	70	2.0	54	-0.1	54	\$42
LONGFORD LFDB556	LFDFZ0556	0.0	80	3.0	73	12	77	0.2	55	0.7	52	\$51
LONGFORD LFDR8302	LFDFA8302	1.4	83	1.7	71	6	80	3.7	57	1.0	58	\$322
LONGFORD LFDR8316	LFDFA8316	0.0	78	0.3	65	-5	75	0.0	47	1.7	42	-\$20
LONGFORD LFDR8323	LFDFA8323	0.6	77	2.7	67	8	75	2.4	53	0.7	49	\$160
LONGFORD LFDR8330	LFDFA8330	0.7	85	0.8	74	-7	83	3.7	60	1.0	58	\$118
LONGFORD LFDR8421	LFDFA8421	-0.3	64	-0.3	59	-13	59	2.1	53	0.0	55	-\$117
LONGFORD LFDR8425	LFDFA8425	0.0	83	-0.6	72	14	81	-1.1	57	1.2	58	\$59
LONGFORD LFDR8439	LFDFA8439	0.1	81	-0.7	73	15	78	-0.8	60	1.1	58	\$86
LONGFORD LFDR8441	LFDFA8441	0.2	80	1.1	65	33	76	-0.3	48	-0.7	49	\$183
MACQUARIE WAGYU C1176	BDWFC1176	3.2	88	5.4	72	18	87	3.3	84	-2.1	84	\$763
MACQUARIE WAGYU C1214	BDWFC1214	1.0	83	3.3	70	8	80	0.8	75	2.4	77	\$247
MACQUARIE WAGYU F C1306	BDWFC1306	-0.4	90	0.0	72	22	89	-1.5	81	-0.9	86	\$8
MACQUARIE WAGYU X370	BDWFX0370	0.1	87	0.4	68	15	85	-0.9	79	-0.9	82	\$85
MACQUARIE WAGYU Y408	BDWFO408	2.1	86	4.0	72	23	84	2.6	80	-4.4	80	\$548
MACQUARIE WAGYU Y512	BDWFO512	1.7	85	3.3	73	-5	82	2.4	78	-0.2	78	\$334
MACQUARIE WAGYU Y526	BDWFO526	-0.7	90	-0.8	71	-8	89	2.2	86	-0.9	87	-\$178
MAYURA ACCLAIM	ADBFA0144	1.2	79	1.0	76	8	73	1.5	68	0.8	68	\$287
MAYURA ADMIRAL A0113	ADBFA0113	1.6	87	2.2	84	13	83	3.9	80	0.5	80	\$398
MAYURA D0410	ADBFD0410	0.5	87	2.5	83	12	83	-4.9	80	3.5	80	\$159
MAYURA D0427	ADBFD0427	1.3	81	1.0	76	12	77	-1.5	73	-1.7	74	\$330
MAYURA D0454	ADBFD0454	0.4	86	-0.6	83	37	80	-3.9	78	2.7	78	\$244
MAYURA D0482	ADBFD0482	2.1	83	4.8	81	3	78	6.0	76	-2.2	76	\$457
MAYURA D403	ADBFD0403	0.8	82	2.8	78	24	77	3.2	75	2.7	75	\$274
MAYURA D452	ADBFD0452	0.2	82	-0.8	80	16	76	-2.7	73	0.3	73	\$111
MAYURA D489	ADBFD0489	1.2	80	1.2	75	11	75	4.3	72	-3.9	72	\$303
MAYURA EMPEROR	ADBFE0172	1.0	78	1.5	75	-9	73	4.5	71	0.3	70	\$171
MAYURA F D0434	ADBFD0434	0.7	75	3.7	72	23	70	-1.5	67	1.7	68	\$247
MAYURA ITOSHIGENAMI JNR	ADBFA0139	2.5	95	3.4	93	15	92	8.6	91	-0.6	91	\$596
MAYURA ZEUS	ADBFZ0035	1.3	81	0.2	77	11	77	-1.2	74	2.8	74	\$325
MAYURA ZULU	ADBFZ0025	0.2	96	-1.4	95	15	95	0.4	94	0.8	94	\$107
MAZDA WAGYU DAMEIN	MWSFW0262	1.2	59	1.1	58	6	57	0.3	55	1.5	55	\$281
MOYHU F D0512	MOYFD0512	2.2	77	3.2	74	-12	73	2.0	67	-2.5	70	\$405
MOYHU F D507	MOYFD0507	1.5	78	3.0	75	-18	74	2.3	60	-0.3	71	\$232
MOYHU F D508	MOYFD0508	0.8	74	0.1	72	4	70	2.4	59	2.5	68	\$185
MOYHU F D517	MOYFD0517	0.0	80	-1.5	77	12	76	1.3	64	-1.7	73	\$51
MOYHU F Y102	MOYFY0102	-1.5	87	-5.4	74	0	87	2.5	82	-2.5	83	-\$314
MOYHU ICHIRYUNO A244	MOYFA0244	-0.2	77	-1.2	73	7	77	1.9	70	-0.7	71	-\$12
OVERFLOW KATSUMI (IMP USA)	WSRFS0060	1.3	82	3.3	74	-18	92	3.0	82	-0.1	89	\$192
SHADAI FARM SHIGEDOJ	SFWFD0144	0.5	54	0.2	52	-6	51	0.2	48	1.5	48	\$81
SHER F B033	SWSFB0033	-0.3	79	-0.1	70	-5	74	3.7	72	-0.4	72	-\$84
SHER ZURUSHIGE B119	SWSFB0119	2.3	76	5.5	65	17	73	3.1	70	3.7	70	\$563
SHERRALOY BAROZA	DGCFW0101	0.2	62	1.5	60	10	57	-2.0	54	3.8	54	\$84
SHIGEFUKU J1822 (IMP JAP)	IMJFF0005	0.0	85	-1.8	74	-17	90	-2.6	83	0.5	86	-\$71
SUMO CATTLE CO TERUTANI D024	SMOFD0024	-0.5	80	0.3	77	-8	77	0.2	68	1.1	74	-\$138

## Black Wagyu Sire Sorted Alphabetically

ANIMAL NAME	ANIMAL ID	MARBLE SCORE		MARBLE FINENESS (%)		CARCASE WEIGHT		EYE MUSCLE AREA (SQ. CM)		RUMP FAT (MM)		FB TERM INDX
		EBV	Acc.	EBV	Acc.	EBV	Acc.	EBV	Acc.	EBV	Acc.	
TAKEDA FARM FUKUTSURU 003	TFWFW0627	0.2	81	0.7	78	-1	74	-3.2	71	7.4	71	\$39
TAKEDA FARM FUKUTSURU 004	TFWFW0629	0.8	85	2.6	77	10	88	-1.6	82	4.2	85	\$210
TAMARIND T4 ITOSHIGEFUJI 06/4	KT4FB0272	-0.4	87	-1.5	75	40	87	0.1	81	2.9	81	\$81
TAMARIND T4 ITOZURUDOI 07/1	KT4FC0426	-0.5	74	0.7	63	34	76	-0.2	71	0.6	74	\$34
TERUTANI J2494 TF40 (IMP JAP)	IMUFJTF40	-0.1	87	-0.2	80	-10	88	1.5	82	-0.2	84	-\$65
TF ITOHANA 2 (IMP USA)	IMUFN2294	0.6	92	2.4	88	25	94	-3.0	90	2.0	91	\$235
TF ITOHANA 38/14 (IMP USA)	IMUFRTF96	-0.1	85	0.7	71	10	83	0.2	78	2.8	79	\$23
TF ITOMICHI 1/2 (IMP USA)	IMUFPO036	0.6	91	1.0	88	24	92	-8.0	88	4.1	89	\$233
TF MITSUHIKOKURA 43 (IMP USA)	IMUFQ3218	-0.1	64	-2.4	60	30	68	0.6	45	1.1	41	\$104
TF TERUTANI 40/1 (IMP USA)	IMUFR3258	0.3	91	2.0	85	27	94	-2.2	89	1.7	90	\$178
TF YUKIHARUNAMI 4 (IMP USA)	IMUFQ2599	-1.3	91	-2.9	83	21	90	-0.7	86	-0.9	87	-\$189
TWA ICHIRYUNO (IMP USA)	TWAFR0003	-0.4	91	-3.2	84	16	93	3.8	89	-0.3	90	-\$18
TWA SHIKIKAN (IMP USA)	TWAFR0007	0.8	90	1.2	84	-21	93	1.7	85	-0.8	88	\$74
WAGYU GENETICS ITOSHIGEFUJI A0554	WGWFA0554	0.0	77	-1.4	72	34	72	-4.3	61	1.9	56	\$145
WAGYU GENETICS ITOSHIGEFUJI A0555	WGWFA0555	0.5	78	0.3	70	36	75	-5.2	56	1.8	56	\$261
WAGYU GENETICS ITOSHIGENAMI A0557	WGWFA0557	0.7	79	0.0	68	29	76	-1.3	55	1.3	56	\$273
WAGYU GENETICS KANEYAMA B613	WGWFB0613	-0.3	68	-2.1	63	31	65	2.2	56	1.5	54	\$68
WESTHOLME HIRASHIGETAMANA	WESFA0107	-0.6	87	-2.9	77	-14	90	-0.2	84	0.5	85	-\$182
WESTHOLME HIRASHIGETAYASU Z278	WESFZ0278	0.6	74	-1.6	68	35	91	0.6	82	-2.7	89	\$281
WESTHOLME ITOSHIGEFUKU	AACFB0462	1.6	75	3.0	67	1	86	3.0	80	0.6	85	\$338
WESTHOLME ITOSHIGEZURU 1 A0413	AACFA0413	0.6	77	0.4	68	15	87	0.6	80	2.9	85	\$190
WESTHOLME KAIHOU	WESFZ0169	0.1	80	-0.1	64	4	88	-0.2	81	0.9	85	\$38
WESTHOLME SEKIDOI (IMP USA)	WESFTH004	0.1	92	0.5	82	18	92	-0.5	88	-2.1	89	\$99
WESTHOLME TERUAKITSUKI (IMP USA)	WESFX0179	0.5	59	-0.5	55	-7	76	-0.1	64	-2.5	74	\$73
WESTHOLME TERUKATSURIKI-DOI	WESFZ0104	0.6	78	1.1	70	-14	84	-1.0	74	-1.1	80	\$67
WESTHOLME TERUKITAGUNE-DOI	WESFA0120	0.6	80	2.1	74	-4	85	0.9	76	-0.5	81	\$107
WORLD K'S MICHIFUKU	WKSFM0164	1.4	97	4.4	95	-3	98	8.0	96	0.0	97	\$280
WORLD K'S MICHITSURU	WKSFU0006	0.4	78	1.5	71	-2	72	9.3	66	-0.5	64	\$75
WORLD K'S SANJIROU	WKSFP0100	0.7	96	0.5	95	-7	95	9.1	93	-2.5	93	\$117
WORLD K'S YASUFUKU JR	WKSFS0100	0.3	92	-1.5	89	-4	92	5.7	88	1.1	90	\$47
YOKOZUNA SHIKIKAN 2	YOKFW0078	-0.1	72	-0.3	69	18	73	0.7	62	-0.2	52	\$55
YOKOZUNA TANI X353	YOKFX0353	0.4	72	1.2	69	11	71	0.5	59	1.4	55	\$134

## 2013 BORN WAGYU CALVES - AVERAGE EBVs

## 1991 - 2011 BORN

Gestation Length (days)	Birth Weight (kg)	200 Day Weight (kg)	400 Day Weight (kg)	600 Day Weight (kg)	Mature Cow Weight (kg)	Milk (kg)	Scrotal Size (cm)	Carcase Weight (kg)	Eye Musc Area (Sq. cm)	Rib Fat (mm)	Rump Fat (mm)	Retails Beef Yield (%)	Marble Score	Marbling Fineness	Fullblood Terminal Index (\$)
+0.1	+0.9	+9	+13	+17	+17	+1	-0.1	+11	+1.2	+0.3	+0.5	+0.0	+0.2	+0.02	+104

## Black Wagyu Sire Sorted by Fullblood Terminal Index

ANIMAL NAME	ANIMAL ID	MARBLE SCORE		MARBLE FINENESS (%)		CARCASE WEIGHT		EYE MUSCLE AREA (SQ. CM)		RUMP FAT (MM)		FB TERM INDX
		EBV	Acc.	EBV	Acc.	EBV	Acc.	EBV	Acc.	EBV	Acc.	
MACQUARIE WAGYU C1176	BDWFC1176	3.2	88	5.4	72	18	87	3.3	84	-2.1	84	\$763
MAYURA ITOSHIGENAMI JNR	ADBFA0139	2.5	95	3.4	93	15	92	8.6	91	-0.6	91	\$596
SHER ZURUSHIGE B119	SWSFB0119	2.3	76	5.5	65	17	73	3.1	70	3.7	70	\$563
MACQUARIE WAGYU Y408	BDWFO408	2.1	86	4.0	72	23	84	2.6	80	-4.4	80	\$548
MAYURA D0482	ADBFD0482	2.1	83	4.8	81	3	78	6.0	76	-2.2	76	\$457
ITOSHIGENAMI (IMP USA)	IMUFQTF148	2.0	97	1.4	95	3	97	1.8	96	1.6	96	\$434
LONGFORD 005	LDFDY0005	2.1	82	3.9	71	-8	78	3.3	58	-1.0	59	\$405
MOYHU F D0512	MOYFD0512	2.2	77	3.2	74	-12	73	2.0	67	-2.5	70	\$405
MAYURA ADMIRAL A0113	ADBFA0113	1.6	87	2.2	84	13	83	3.9	80	0.5	80	\$398
DIAMOND BRAND ICHIRYUNO Z626	DBDFZ0626	1.2	88	2.0	70	29	86	5.2	83	2.6	83	\$386
LONGFORD 004	LDFDY0004	2.0	84	3.7	72	-9	83	3.6	62	-0.1	70	\$378
WESTHOLME ITOSHIGEFUKU	AACFB0462	1.6	75	3.0	67	1	86	3.0	80	0.6	85	\$338
MACQUARIE WAGYU Y512	BDWFO512	1.7	85	3.3	73	-5	82	2.4	78	-0.2	78	\$334
MAYURA D0427	ADBFD0427	1.3	81	1.0	76	12	77	-1.5	73	-1.7	74	\$330
MAYURA ZEUS	ADBFZ0035	1.3	81	0.2	77	11	77	-1.2	74	2.8	74	\$325
LONGFORD LFDR8302	LFDF8302	1.4	83	1.7	71	6	80	3.7	57	1.0	58	\$322
KURO KIN ITOSHIGENAMI D52	KKWFD0052	1.0	78	2.0	75	25	77	1.6	63	1.6	72	\$321
MAYURA D489	ADBFD0489	1.2	80	1.2	75	11	75	4.3	72	-3.9	72	\$303
COATES TERUTANI X0099	CCOFX0099	0.9	77	5.1	70	24	73	-0.7	58	1.5	56	\$296
MAYURA ACCLAIM	ADBFA0144	1.2	79	1.0	76	8	73	1.5	68	0.8	68	\$287
GINJO MARBLEMAX HIRANAMI B901	GINFB0901	0.7	77	0.0	64	32	80	-0.4	69	-0.3	53	\$286
MAZDA WAGYU DAMEIN	MWSFW0262	1.2	59	1.1	58	6	57	0.3	55	1.5	55	\$281
WESTHOLME HIRASHIGETAYASU Z278	WESFZ0278	0.6	74	-1.6	68	35	91	0.6	82	-2.7	89	\$281
WORLD K'S MICHIFUKU	WKSFM0164	1.4	97	4.4	95	-3	98	8.0	96	0.0	97	\$280
MAYURA D403	ADBFD0403	0.8	82	2.8	78	24	77	3.2	75	2.7	75	\$274
WAGYU GENETICS ITOSHIGENAMI A0557	WGWFA0557	0.7	79	0.0	68	29	76	-1.3	55	1.3	56	\$273
WAGYU GENETICS ITOSHIGEFUJI A0555	WGWFA0555	0.5	78	0.3	70	36	75	-5.2	56	1.8	56	\$261
MACQUARIE WAGYU C1214	BDWFC1214	1.0	83	3.3	70	8	80	0.8	75	2.4	77	\$247
MAYURA F D0434	ADBFD0434	0.7	75	3.7	72	23	70	-1.5	67	1.7	68	\$247
MAYURA D0454	ADBFD0454	0.4	86	-0.6	83	37	80	-3.9	78	2.7	78	\$244
COBUNGRA 5085	898FA0085	0.5	76	1.6	74	32	71	3.9	68	2.1	69	\$243
TF ITOHANA 2 (IMP USA)	IMUFN2294	0.6	92	2.4	88	25	94	-3.0	90	2.0	91	\$235
TF ITOMICHI 1/2 (IMP USA)	IMUFP0036	0.6	91	1.0	88	24	92	-8.0	88	4.1	89	\$233
MOYHU F D507	MOYFD0507	1.5	78	3.0	75	-18	74	2.3	60	-0.3	71	\$232
KINTO SHIKI Y5012	KTOFY5012	1.3	83	2.1	75	-10	80	1.5	69	0.9	60	\$226
KURO KIN ITOSHIGENAMI 15	KKWFB0326	0.6	77	0.2	73	22	76	-1.1	72	2.3	74	\$224
KURO KIN DM100 D22	KKWFD0022	0.6	77	0.5	74	20	75	2.9	59	-0.8	69	\$215
TAKEDA FARM FUKUTSURU 004	TFWFW0629	0.8	85	2.6	77	10	88	-1.6	82	4.2	85	\$210
LONGFORD F X138	LFDFX0138	0.7	83	0.5	69	12	80	0.3	51	-1.0	53	\$198
OVERFLOW KATSUMI (IMP USA)	WSRFS0060	1.3	82	3.3	74	-18	92	3.0	82	-0.1	89	\$192
ITOZURUDOI TF151 (IMP USA)	IMUFLTF151	0.5	94	3.9	91	20	95	1.1	93	0.8	94	\$191
WESTHOLME ITOSHIGEZURU 1 A0413	AACFA0413	0.6	77	0.4	68	15	87	0.6	80	2.9	85	\$190
KITATERUYASUDO J2810 HONGEN (IMP JAP)	IMJFAJ2810	1.1	96	1.1	92	-10	98	1.2	97	-2.9	97	\$188
MOYHU F D508	MOYFD0508	0.8	74	0.1	72	4	70	2.4	59	2.5	68	\$185
LONGFORD LFDR8441	LFDF8441	0.2	80	1.1	65	33	76	-0.3	48	-0.7	49	\$183
TF TERUTANI 40/1 (IMP USA)	IMUFR3258	0.3	91	2.0	85	27	94	-2.2	89	1.7	90	\$178
GINJO MARBLEMAX Z285	GINFZ0285	0.6	72	0.4	69	11	72	-3.2	61	1.9	56	\$175

## Black Wagyu Sire Sorted by Fullblood Terminal Index

ANIMAL NAME	ANIMAL ID	MARBLE SCORE		MARBLE FINENESS (%)		CARCASS WEIGHT		EYE MUSCLE AREA (SQ. CM)		RUMP FAT (MM)		FB TERM INDX
		EBV	Acc.	EBV	Acc.	EBV	Acc.	EBV	Acc.	EBV	Acc.	
BALD RIDGE ITOZURUDOI B205	CCCFB0205	0.2	83	1.9	69	31	86	1.3	80	0.5	80	\$174
MAYURA EMPEROR	ADBF0172	1.0	78	1.5	75	-9	73	4.5	71	0.3	70	\$171
KURO KIN DM 100/4	KKWFB0364	0.4	84	1.7	82	18	81	-2.6	77	-1.4	78	\$160
LONGFORD LFDR8323	LFDA8323	0.6	77	2.7	67	8	75	2.4	53	0.7	49	\$160
MAYURA D0410	ADBF0410	0.5	87	2.5	83	12	83	-4.9	80	3.5	80	\$159
WAGYU GENETICS ITOSHIGEFUJI A0554	WGWFA0554	0.0	77	-1.4	72	34	72	-4.3	61	1.9	56	\$145
HAWKRIDGE AKIWAWA	ESKFU0005	0.1	76	0.4	65	29	75	-3.2	70	5.4	71	\$144
LONGFORD LFDB1193	LFDFZ1193	0.3	81	0.2	71	18	79	-1.0	57	1.0	58	\$140
COBUNGRA 5002	898FA0002	0.2	82	2.5	78	22	77	5.8	72	-0.8	72	\$135
YOKOZUNA TANI X353	YOKFX0353	0.4	72	1.2	69	11	71	0.5	59	1.4	55	\$134
HIRASHIGETAYASU J2351 HONGEN (IMP JAP)	IMJFAJ2351	0.1	95	-2.6	89	25	97	0.3	96	-1.0	97	\$127
LONGFORD B8772	LFDFB8772	0.4	79	1.5	66	10	76	1.1	54	0.5	56	\$127
DALLROSE ITOSHIGEFUJI B2	AMWFB0002	-0.2	74	2.2	67	39	68	1.6	58	0.0	64	\$123
GOSHU MICHITARO	GOSFU0083	0.8	79	3.1	75	-11	81	4.7	71	-0.6	75	\$119
LONGFORD LFDR8330	LFDA8330	0.7	85	0.8	74	-7	83	3.7	60	1.0	58	\$118
WORLD K'S SANJIROU	WKSFP0100	0.7	96	0.5	95	-7	95	9.1	93	-2.5	93	\$117
MAYURA D452	ADBF0452	0.2	82	-0.8	80	16	76	-2.7	73	0.3	73	\$111
MAYURA ZULU	ADBFZ0025	0.2	96	-1.4	95	15	95	0.4	94	0.8	94	\$107
WESTHOLME TERUKITAGUNE-DOI	WESFA0120	0.6	80	2.1	74	-4	85	0.9	76	-0.5	81	\$107
TF MITSUHIKOKURA 43 (IMP USA)	IMUFQ3218	-0.1	64	-2.4	60	30	68	0.6	45	1.1	41	\$104
BAR R SANJIRO 4P (IMP USA)	IMUFY5663	0.5	77	2.2	73	-1	78	4.3	67	-0.6	73	\$102
WESTHOLME SEKIDOI (IMP USA)	WESFTH004	0.1	92	0.5	82	18	92	-0.5	88	-2.1	89	\$99
GOSHU FUKUMURA	GOSFB0377	0.6	61	2.0	58	-7	56	1.2	54	2.5	55	\$97
LONGFORD LFDB1195	LFDFZ1195	0.1	84	-0.4	73	18	82	-1.0	57	1.0	58	\$96
KURO KIN KATSUMI 4	KKWFA0868	0.6	75	1.3	67	-8	74	0.6	62	1.4	67	\$92
LONGFORD LFDR8439	LFDA8439	0.1	81	-0.7	73	15	78	-0.8	60	1.1	58	\$86
MACQUARIE WAGYU X370	BDWFX0370	0.1	87	0.4	68	15	85	-0.9	79	-0.9	82	\$85
SHERRALOY BAROZA	DGCFW0101	0.2	62	1.5	60	10	57	-2.0	54	3.8	54	\$84
FUKUTSURU J068 (IMP JAP)	IMJFMJ068	0.5	94	3.8	89	-5	95	0.1	92	5.8	92	\$83
SHADAI FARM SHIGEDO I	SFWFD0144	0.5	54	0.2	52	-6	51	0.2	48	1.5	48	\$81
TAMARIND T4 ITOSHIGEFUJI 06/4	KT4FB0272	-0.4	87	-1.5	75	40	87	0.1	81	2.9	81	\$81
WORLD K'S MICHITSURU	WKSFU0006	0.4	78	1.5	71	-2	72	9.3	66	-0.5	64	\$75
TWA SHIKIKAN (IMP USA)	TWAFR0007	0.8	90	1.2	84	-21	93	1.7	85	-0.8	88	\$74
WESTHOLME TERUAKITSUKI (IMP USA)	WESFX0179	0.5	59	-0.5	55	-7	76	-0.1	64	-2.5	74	\$73
WAGYU GENETICS KANEYAMA B613	WGWFB0613	-0.3	68	-2.1	63	31	65	2.2	56	1.5	54	\$68
WESTHOLME TERUKATSURIKI-DOI	WESFZ0104	0.6	78	1.1	70	-14	84	-1.0	74	-1.1	80	\$67
LONGFORD ITOZURUDO I B558	LFDFZ0558	0.0	81	0.3	70	15	80	0.1	62	1.3	68	\$62
DIAMOND BRAND ICHIRYUNO Z680	DBDFZ0680	0.2	82	-0.2	67	4	79	2.9	71	3.5	72	\$61
LONGFORD LFDR8425	LFDA8425	0.0	83	-0.6	72	14	81	-1.1	57	1.2	58	\$59
YOKOZUNA SHIKIKAN 2	YOKFW0078	-0.1	72	-0.3	69	18	73	0.7	62	-0.2	52	\$55
ECHIGO FARMS F B1001	ECHFB1001	-0.2	74	-2.3	61	23	78	0.8	66	0.4	58	\$53
LONGFORD LFDB556	LFDFZ0556	0.0	80	3.0	73	12	77	0.2	55	0.7	52	\$51
MOYHU F D517	MOYFD0517	0.0	80	-1.5	77	12	76	1.3	64	-1.7	73	\$51
WORLD K'S YASUFUKU JR	WKSFS0100	0.3	92	-1.5	89	-4	92	5.7	88	1.1	90	\$47
LONGFORD LFDB1200	LFDFZ1200	0.1	73	0.4	66	5	70	2.0	54	-0.1	54	\$42
TAKEDA FARM FUKUTSURU 003	TFWF0627	0.2	81	0.7	78	-1	74	-3.2	71	7.4	71	\$39
WESTHOLME KAIHOU	WESFZ0169	0.1	80	-0.1	64	4	88	-0.2	81	0.9	85	\$38



## Black Wagyu Sire Sorted by Fullblood Terminal Index

ANIMAL NAME	ANIMAL ID	MARBLE SCORE		MARBLE FINENESS (%)		CARCASS WEIGHT		EYE MUSCLE AREA (SQ. CM)		RUMP FAT (MM)		FB TERM INDX
		EBV	Acc.	EBV	Acc.	EBV	Acc.	EBV	Acc.	EBV	Acc.	
LISNAGARVEY KANEHANA B024	LISFB0024	0.1	73	-1.4	62	4	75	2.3	69	1.9	71	\$36
TAMARIND T4 ITOZURUDOI 07/1	KT4FC0426	-0.5	74	0.7	63	34	76	-0.2	71	0.6	74	\$34
TF ITOHANA 38/14 (IMP USA)	IMUFRTF96	-0.1	85	0.7	71	10	83	0.2	78	2.8	79	\$23
MACQUARIE WAGYU F C1306	BDWFC1306	-0.4	90	0.0	72	22	89	-1.5	81	-0.9	86	\$8
ITOSHIGEFUJI (IMP USA)	IMUFQTF147	-0.7	97	-2.6	95	34	97	-6.9	95	1.9	95	-\$8
MOYHU ICHIRYUNO A244	MOYFA0244	-0.2	77	-1.2	73	7	77	1.9	70	-0.7	71	-\$12
COBUNGRA 5013	898FA0013	-0.4	86	-1.2	83	17	81	8.8	78	1.7	78	-\$13
TWA ICHIRYUNO (IMP USA)	TWAFR0003	-0.4	91	-3.2	84	16	93	3.8	89	-0.3	90	-\$18
GOSHU SANAMI	GOSFB0410	0.3	93	-1.1	84	-19	92	4.7	88	-4.3	88	-\$19
LONGFORD LFDR8316	LFDF8316	0.0	78	0.3	65	-5	75	0.0	47	1.7	42	-\$20
GOSHU FUKUNAGA	GOSFB0404	0.0	92	0.6	84	-5	91	3.5	87	4.3	89	-\$23
LONGFORD LFDB1194	LFDFZ1194	-0.2	82	-1.0	73	2	80	-1.1	60	1.5	58	-\$34
KINTO MICHIFUKU V2085	KTOFV2085	-0.1	86	2.1	77	-3	84	2.4	68	1.7	56	-\$35
LONGFORD 464	LFDFW0464	-0.1	77	0.7	66	-4	74	0.4	54	2.1	56	-\$39
GOSHU FUKUZAKI	GOSFC0457	-0.4	93	2.6	83	10	91	0.5	88	0.8	89	-\$42
ITOMORITAKA J2703 HONGEN (IMP JAP)	IMJFAJ2703	-0.7	92	-3.8	82	24	96	1.6	93	1.4	95	-\$51
EXCEL HIRAKITADOI A0009	EXLFA0009	-0.2	77	-3.7	73	-3	71	1.1	64	-0.6	57	-\$55
LONGFORD F X180	LFDFX0180	-0.4	77	-1.8	65	7	74	1.3	57	-1.0	59	-\$55
TERUTANI J2494 TF40 (IMP JAP)	IMUFJTF40	-0.1	87	-0.2	80	-10	88	1.5	82	-0.2	84	-\$65
SHIGEFUKU J1822 (IMP JAP)	IMJFF0005	0.0	85	-1.8	74	-17	90	-2.6	83	0.5	86	-\$71
SHER F B033	SWSFB0033	-0.3	79	-0.1	70	-5	74	3.7	72	-0.4	72	-\$84
EXCEL SURUKIKU B0004	EXLFB0004	-0.7	80	-5.5	76	14	76	-0.1	64	0.8	55	-\$91
KITATSURUKIKU DOI (IMP JAP)	IMJFQ3161	-0.4	86	-3.4	78	-6	92	-1.1	86	1.2	90	-\$110
LONGFORD LFDR8421	LFDF8421	-0.3	64	-0.3	59	-13	59	2.1	53	0.0	55	-\$117
GOSHU SANJO SANETOMI	GOSFB0390	-0.5	86	-1.8	77	-6	82	4.8	75	-0.4	76	-\$131
SUMO CATTLE CO TERUTANI D024	SMOFD0024	-0.5	80	0.3	77	-8	77	0.2	68	1.1	74	-\$138
MACQUARIE WAGYU Y526	BDWFY0526	-0.7	90	-0.8	71	-8	89	2.2	86	-0.9	87	-\$178
WESTHOLME HIRASHIGETAMANA	WESFA0107	-0.6	87	-2.9	77	-14	90	-0.2	84	0.5	85	-\$182
TF YUKIHARUNAMI 4 (IMP USA)	IMUFQ2599	-1.3	91	-2.9	83	21	90	-0.7	86	-0.9	87	-\$189
GOSHU SANAKA	GOSFB0417	-0.9	86	-1.8	81	-21	83	4.0	77	1.1	79	-\$272
GOSHU SANAGU	GOSFB0419	-1.1	88	-3.3	80	-15	86	7.1	78	-0.4	83	-\$292
KIKUTERUSHIGE (IMP USA)	IMUFMTF150	-0.8	93	0.3	88	-32	95	1.4	91	0.4	93	-\$299
MOYHU F Y102	MOYFY0102	-1.5	87	-5.4	74	0	87	2.5	82	-2.5	83	-\$314
GOSHU FUKUTOMI	GOSFB0400	-1.3	92	1.6	84	-12	90	1.4	87	2.0	87	-\$319

BLACK WAGYU SIRE

### 2013 BORN WAGYU CALVES - AVERAGE EBVs

Gestation Length (days)	Birth Weight (kg)	200 Day Weight (kg)	400 Day Weight (kg)	600 Day Weight (kg)	Mature Cow Weight (kg)	Milk (kg)	Scrotal Size (cm)	Carcass Weight (kg)	Eye Musc Area (Sq. cm)	Rib Fat (mm)	Rump Fat (mm)	Retails Beef Yield (%)
+0.1	+0.9	+9	+13	+17	+17	+1	-0.1	+11	+1.2	+0.3	+0.5	+0.0

### 1991 - 2011 BORN

Marble Score	Marbling Fineness	Fullblood Terminal Index (\$)
+0.2	+0.02	+104

## Black Wagyu Sire Sorted by Marble Score

ANIMAL NAME	ANIMAL ID	MARBLE SCORE		MARBLE FINENESS (%)		CARCASS WEIGHT		EYE MUSCLE AREA (SQ. CM)		RUMP FAT (MM)		FB TERM INDX
		EBV	Acc.	EBV	Acc.	EBV	Acc.	EBV	Acc.	EBV	Acc.	
MACQUARIE WAGYU C1176	BDWFC1176	3.2	88	5.4	72	18	87	3.3	84	-2.1	84	\$763
MAYURA ITOSHIGENAMI JNR	ADBFA0139	2.5	95	3.4	93	15	92	8.6	91	-0.6	91	\$596
SHER ZURUSHIGE B119	SWSFB0119	2.3	76	5.5	65	17	73	3.1	70	3.7	70	\$563
MOYHU F D0512	MOYFD0512	2.2	77	3.2	74	-12	73	2.0	67	-2.5	70	\$405
LONGFORD 005	LFDFY0005	2.1	82	3.9	71	-8	78	3.3	58	-1.0	59	\$405
MACQUARIE WAGYU Y408	BDWFY0408	2.1	86	4.0	72	23	84	2.6	80	-4.4	80	\$548
MAYURA D0482	ADBFD0482	2.1	83	4.8	81	3	78	6.0	76	-2.2	76	\$457
ITOSHIGENAMI (IMP USA)	IMUFQTF148	2.0	97	1.4	95	3	97	1.8	96	1.6	96	\$434
LONGFORD 004	LFDFY0004	2.0	84	3.7	72	-9	83	3.6	62	-0.1	70	\$378
MACQUARIE WAGYU Y512	BDWFY0512	1.7	85	3.3	73	-5	82	2.4	78	-0.2	78	\$334
MAYURA ADMIRAL A0113	ADBFA0113	1.6	87	2.2	84	13	83	3.9	80	0.5	80	\$398
WESTHOLME ITOSHIGEFUKU	AACFB0462	1.6	75	3.0	67	1	86	3.0	80	0.6	85	\$338
MOYHU F D507	MOYFD0507	1.5	78	3.0	75	-18	74	2.3	60	-0.3	71	\$232
LONGFORD LFDR8302	LFDAF8302	1.4	83	1.7	71	6	80	3.7	57	1.0	58	\$322
WORLD K'S MICHIFUKU	WKSFM0164	1.4	97	4.4	95	-3	98	8.0	96	0.0	97	\$280
KINTO SHIKI Y5012	KTOFY5012	1.3	83	2.1	75	-10	80	1.5	69	0.9	60	\$226
MAYURA D0427	ADBFD0427	1.3	81	1.0	76	12	77	-1.5	73	-1.7	74	\$330
MAYURA ZEUS	ADBFZ0035	1.3	81	0.2	77	11	77	-1.2	74	2.8	74	\$325
OVERFLOW KATSUMI (IMP USA)	WSRFS0060	1.3	82	3.3	74	-18	92	3.0	82	-0.1	89	\$192
DIAMOND BRAND ICHIRYUNO Z626	DBDFZ0626	1.2	88	2.0	70	29	86	5.2	83	2.6	83	\$386
MAYURA ACCLAIM	ADBFA0144	1.2	79	1.0	76	8	73	1.5	68	0.8	68	\$287
MAYURA D489	ADBFD0489	1.2	80	1.2	75	11	75	4.3	72	-3.9	72	\$303
MAZDA WAGYU DAMEIN	MWSFW0262	1.2	59	1.1	58	6	57	0.3	55	1.5	55	\$281
KITATERUYASUDO J2810 HONGEN (IMP JAP)	IMJFAJ2810	1.1	96	1.1	92	-10	98	1.2	97	-2.9	97	\$188
KURO KIN ITOSHIGENAMI D52	KKWFD0052	1.0	78	2.0	75	25	77	1.6	63	1.6	72	\$321
MACQUARIE WAGYU C1214	BDWFC1214	1.0	83	3.3	70	8	80	0.8	75	2.4	77	\$247
MAYURA EMPEROR	ADBF0172	1.0	78	1.5	75	-9	73	4.5	71	0.3	70	\$171
COATES TERUTANI X0099	CCOFX0099	0.9	77	5.1	70	24	73	-0.7	58	1.5	56	\$296
GOSHU MICHITARO	GOSFU0083	0.8	79	3.1	75	-11	81	4.7	71	-0.6	75	\$119
MAYURA D403	ADBFD0403	0.8	82	2.8	78	24	77	3.2	75	2.7	75	\$274
MOYHU F D508	MOYFD0508	0.8	74	0.1	72	4	70	2.4	59	2.5	68	\$185
TAKEDA FARM FUKUTSURU 004	TFWF0629	0.8	85	2.6	77	10	88	-1.6	82	4.2	85	\$210
TWA SHIKIKAN (IMP USA)	TWAFR0007	0.8	90	1.2	84	-21	93	1.7	85	-0.8	88	\$74
GINJO MARBLEMAX HIRANAMI B901	GINFB0901	0.7	77	0.0	64	32	80	-0.4	69	-0.3	53	\$286
LONGFORD F X138	LFDFX0138	0.7	83	0.5	69	12	80	0.3	51	-1.0	53	\$198
LONGFORD LFDR8330	LFDAF8330	0.7	85	0.8	74	-7	83	3.7	60	1.0	58	\$118
MAYURA F D0434	ADBFD0434	0.7	75	3.7	72	23	70	-1.5	67	1.7	68	\$247
WAGYU GENETICS ITOSHIGENAMI A0557	WGWFA0557	0.7	79	0.0	68	29	76	-1.3	55	1.3	56	\$273
WORLD K'S SANJIROU	WKSFP0100	0.7	96	0.5	95	-7	95	9.1	93	-2.5	93	\$117
GINJO MARBLEMAX Z285	GINFZ0285	0.6	72	0.4	69	11	72	-3.2	61	1.9	56	\$175
GOSHU FUKUMURA	GOSFB0377	0.6	61	2.0	58	-7	56	1.2	54	2.5	55	\$97
KURO KIN DM100 D22	KKWFD0022	0.6	77	0.5	74	20	75	2.9	59	-0.8	69	\$215
KURO KIN ITOSHIGENAMI 15	KKWFB0326	0.6	77	0.2	73	22	76	-1.1	72	2.3	74	\$224
KURO KIN KATSUMI 4	KKWFA0868	0.6	75	1.3	67	-8	74	0.6	62	1.4	67	\$92
LONGFORD LFDR8323	LFDAF8323	0.6	77	2.7	67	8	75	2.4	53	0.7	49	\$160
TF ITOHANA 2 (IMP USA)	IMUFN2294	0.6	92	2.4	88	25	94	-3.0	90	2.0	91	\$235
TF ITOMICHI 1/2 (IMP USA)	IMUFP0036	0.6	91	1.0	88	24	92	-8.0	88	4.1	89	\$233

## Black Wagyu Sire Sorted by Marble Score

ANIMAL NAME	ANIMAL ID	MARBLE SCORE		MARBLE FINENESS (%)		CARCASE WEIGHT		EYE MUSCLE AREA (SQ. CM)		RUMP FAT (MM)		FB TERM INDX
		EBV	Acc.	EBV	Acc.	EBV	Acc.	EBV	Acc.	EBV	Acc.	
WESTHOLME HIRASHIGETAYASU Z278	WESFZ0278	0.6	74	-1.6	68	35	91	0.6	82	-2.7	89	\$281
WESTHOLME ITOSHIGEZURU 1 A0413	AACFA0413	0.6	77	0.4	68	15	87	0.6	80	2.9	85	\$190
WESTHOLME TERUKATSURIKI-DOI	WESFZ0104	0.6	78	1.1	70	-14	84	-1.0	74	-1.1	80	\$67
WESTHOLME TERUKITAGUNE-DOI	WESFA0120	0.6	80	2.1	74	-4	85	0.9	76	-0.5	81	\$107
BAR R SANJIRO 4P (IMP USA)	IMUFY5663	0.5	77	2.2	73	-1	78	4.3	67	-0.6	73	\$102
COBUNGRA 5085	898FA0085	0.5	76	1.6	74	32	71	3.9	68	2.1	69	\$243
FUKUTSURU J068 (IMP JAP)	IMJFMJ068	0.5	94	3.8	89	-5	95	0.1	92	5.8	92	\$83
ITOZURUDOI TF151 (IMP USA)	IMUFLTF151	0.5	94	3.9	91	20	95	1.1	93	0.8	94	\$191
MAYURA D0410	ADBFD0410	0.5	87	2.5	83	12	83	-4.9	80	3.5	80	\$159
SHADAI FARM SHIGEDO	SFDF0144	0.5	54	0.2	52	-6	51	0.2	48	1.5	48	\$81
WAGYU GENETICS ITOSHIGEFUJI A0555	WGWA0555	0.5	78	0.3	70	36	75	-5.2	56	1.8	56	\$261
WESTHOLME TERUAKITSUKI (IMP USA)	WESFX0179	0.5	59	-0.5	55	-7	76	-0.1	64	-2.5	74	\$73
KURO KIN DM 100/4	KKWFB0364	0.4	84	1.7	82	18	81	-2.6	77	-1.4	78	\$160
LONGFORD B8772	LFDFB8772	0.4	79	1.5	66	10	76	1.1	54	0.5	56	\$127
MAYURA D0454	ADBFD0454	0.4	86	-0.6	83	37	80	-3.9	78	2.7	78	\$244
WORLD K'S MICHITSURU	WKSFU0006	0.4	78	1.5	71	-2	72	9.3	66	-0.5	64	\$75
YOKOZUNA TANI X353	YOKFX0353	0.4	72	1.2	69	11	71	0.5	59	1.4	55	\$134
GOSHU SANAMI	GOSFB0410	0.3	93	-1.1	84	-19	92	4.7	88	-4.3	88	-\$19
LONGFORD LFDB1193	LFDFZ1193	0.3	81	0.2	71	18	79	-1.0	57	1.0	58	\$140
TF TERUTANI 40/1 (IMP USA)	IMUFR3258	0.3	91	2.0	85	27	94	-2.2	89	1.7	90	\$178
WORLD K'S YASUFUKU JR	WKSFS0100	0.3	92	-1.5	89	-4	92	5.7	88	1.1	90	\$47
BALD RIDGE ITOZURUDOI B205	CCCFB0205	0.2	83	1.9	69	31	86	1.3	80	0.5	80	\$174
COBUNGRA 5002	898FA0002	0.2	82	2.5	78	22	77	5.8	72	-0.8	72	\$135
DIAMOND BRAND ICHIRYUNO Z680	DBDFZ0680	0.2	82	-0.2	67	4	79	2.9	71	3.5	72	\$61
LONGFORD LFDR8441	LFDF8441	0.2	80	1.1	65	33	76	-0.3	48	-0.7	49	\$183
MAYURA D452	ADBFD0452	0.2	82	-0.8	80	16	76	-2.7	73	0.3	73	\$111
MAYURA ZULU	ADBFZ0025	0.2	96	-1.4	95	15	95	0.4	94	0.8	94	\$107
SHERRALOY BAROZA	DGCFW0101	0.2	62	1.5	60	10	57	-2.0	54	3.8	54	\$84
TAKEDA FARM FUKUTSURU 003	TFWF0627	0.2	81	0.7	78	-1	74	-3.2	71	7.4	71	\$39
HAWKRIDGE AKIYAWA	ESKFU0005	0.1	76	0.4	65	29	75	-3.2	70	5.4	71	\$144
HIRASHIGETAYASU J2351 HONGEN (IMP JAP)	IMJFAJ2351	0.1	95	-2.6	89	25	97	0.3	96	-1.0	97	\$127
LISNAGARVEY KANEHANA B024	LISFB0024	0.1	73	-1.4	62	4	75	2.3	69	1.9	71	\$36
LONGFORD LFDB1195	LFDFZ1195	0.1	84	-0.4	73	18	82	-1.0	57	1.0	58	\$96
LONGFORD LFDB1200	LFDFZ1200	0.1	73	0.4	66	5	70	2.0	54	-0.1	54	\$42
LONGFORD LFDR8439	LFDF8439	0.1	81	-0.7	73	15	78	-0.8	60	1.1	58	\$86
MACQUARIE WAGYU X370	BDWFX0370	0.1	87	0.4	68	15	85	-0.9	79	-0.9	82	\$85
WESTHOLME KAIHOU	WESFZ0169	0.1	80	-0.1	64	4	88	-0.2	81	0.9	85	\$38
WESTHOLME SEKIDOI (IMP USA)	WESFTH004	0.1	92	0.5	82	18	92	-0.5	88	-2.1	89	\$99
GOSHU FUKUNAGA	GOSFB0404	0.0	92	0.6	84	-5	91	3.5	87	4.3	89	-\$23
LONGFORD ITOZURUDOI B558	LFDFZ0558	0.0	81	0.3	70	15	80	0.1	62	1.3	68	\$62
LONGFORD LFDB556	LFDFZ0556	0.0	80	3.0	73	12	77	0.2	55	0.7	52	\$51
LONGFORD LFDR8316	LFDF8316	0.0	78	0.3	65	-5	75	0.0	47	1.7	42	-\$20
LONGFORD LFDR8425	LFDF8425	0.0	83	-0.6	72	14	81	-1.1	57	1.2	58	\$59
MOYHU F D517	MOYFD0517	0.0	80	-1.5	77	12	76	1.3	64	-1.7	73	\$51
SHIGEFUKU J1822 (IMP JAP)	IMJFF0005	0.0	85	-1.8	74	-17	90	-2.6	83	0.5	86	-\$71
WAGYU GENETICS ITOSHIGEFUJI A0554	WGWA0554	0.0	77	-1.4	72	34	72	-4.3	61	1.9	56	\$145
KINTO MICHIFUKU V2085	KTOFV2085	-0.1	86	2.1	77	-3	84	2.4	68	1.7	56	-\$35

## Black Wagyu Sire Sorted by Marble Score

ANIMAL NAME	ANIMAL ID	MARBLE SCORE		MARBLE FINENESS (%)		CARCASE WEIGHT		EYE MUSCLE AREA (SQ. CM)		RUMP FAT (MM)		FB TERM INDX
		EBV	Acc.	EBV	Acc.	EBV	Acc.	EBV	Acc.	EBV	Acc.	
LONGFORD 464	LFDFW0464	-0.1	77	0.7	66	-4	74	0.4	54	2.1	56	-\$39
TERUTANI J2494 TF40 (IMP JAP)	IMUFJTF40	-0.1	87	-0.2	80	-10	88	1.5	82	-0.2	84	-\$65
TF ITOHANA 38/14 (IMP USA)	IMUFRTF96	-0.1	85	0.7	71	10	83	0.2	78	2.8	79	\$23
TF MITSUHIKOKURA 43 (IMP USA)	IMUFQ3218	-0.1	64	-2.4	60	30	68	0.6	45	1.1	41	\$104
YOKOZUNA SHIKIKAN 2	YOKFW0078	-0.1	72	-0.3	69	18	73	0.7	62	-0.2	52	\$55
DALLROSE ITOSHIGEFUJI B2	AMWFB0002	-0.2	74	2.2	67	39	68	1.6	58	0.0	64	\$123
ECHIGO FARMS F B1001	ECHFB1001	-0.2	74	-2.3	61	23	78	0.8	66	0.4	58	\$53
EXCEL HIRAKITADOI A0009	EXLFA0009	-0.2	77	-3.7	73	-3	71	1.1	64	-0.6	57	-\$55
LONGFORD LFDB1194	LFDFZ1194	-0.2	82	-1.0	73	2	80	-1.1	60	1.5	58	-\$34
MOYHU ICHIRYUNO A244	MOYFA0244	-0.2	77	-1.2	73	7	77	1.9	70	-0.7	71	-\$12
LONGFORD LFD8421	LFDA8421	-0.3	64	-0.3	59	-13	59	2.1	53	0.0	55	-\$117
SHER F B033	SWSFB0033	-0.3	79	-0.1	70	-5	74	3.7	72	-0.4	72	-\$84
WAGYU GENETICS KANEYAMA B613	WGWFB0613	-0.3	68	-2.1	63	31	65	2.2	56	1.5	54	\$68
COBUNGRA 5013	898FA0013	-0.4	86	-1.2	83	17	81	8.8	78	1.7	78	-\$13
GOSHU FUKUZAKI	GOSFC0457	-0.4	93	2.6	83	10	91	0.5	88	0.8	89	-\$42
KITATSURUKIKU DOI (IMP JAP)	IMJFQ3161	-0.4	86	-3.4	78	-6	92	-1.1	86	1.2	90	-\$110
LONGFORD F X180	LFDFX0180	-0.4	77	-1.8	65	7	74	1.3	57	-1.0	59	-\$55
MACQUARIE WAGYU F C1306	BDWFC1306	-0.4	90	0.0	72	22	89	-1.5	81	-0.9	86	\$8
TAMARIND T4 ITOSHIGEFUJI 06/4	KT4FB0272	-0.4	87	-1.5	75	40	87	0.1	81	2.9	81	\$81
TWA ICHIRYUNO (IMP USA)	TWAFR0003	-0.4	91	-3.2	84	16	93	3.8	89	-0.3	90	-\$18
GOSHU SANJO SANETOMI	GOSFB0390	-0.5	86	-1.8	77	-6	82	4.8	75	-0.4	76	-\$131
SUMO CATTLE CO TERUTANI D024	SMOFD0024	-0.5	80	0.3	77	-8	77	0.2	68	1.1	74	-\$138
TAMARIND T4 ITOZURUDOI 07/1	KT4FC0426	-0.5	74	0.7	63	34	76	-0.2	71	0.6	74	\$34
WESTHOLME HIRASHIGETAMANA	WESFA0107	-0.6	87	-2.9	77	-14	90	-0.2	84	0.5	85	-\$182
EXCEL SURUKIKU B0004	EXLFB0004	-0.7	80	-5.5	76	14	76	-0.1	64	0.8	55	-\$91
ITOMORITAKA J2703 HONGEN (IMP JAP)	IMJFAJ2703	-0.7	92	-3.8	82	24	96	1.6	93	1.4	95	-\$51
ITOSHIGEFUJI (IMP USA)	IMUFQTF147	-0.7	97	-2.6	95	34	97	-6.9	95	1.9	95	-\$8
MACQUARIE WAGYU Y526	BDWfy0526	-0.7	90	-0.8	71	-8	89	2.2	86	-0.9	87	-\$178
KIKUTERUSHIGE (IMP USA)	IMUFMTF150	-0.8	93	0.3	88	-32	95	1.4	91	0.4	93	-\$299
GOSHU SANAKA	GOSFB0417	-0.9	86	-1.8	81	-21	83	4.0	77	1.1	79	-\$272
GOSHU SANAGU	GOSFB0419	-1.1	88	-3.3	80	-15	86	7.1	78	-0.4	83	-\$292
GOSHU FUKUTOMI	GOSFB0400	-1.3	92	1.6	84	-12	90	1.4	87	2.0	87	-\$319
TF YUKIHARUNAMI 4 (IMP USA)	IMUFQ2599	-1.3	91	-2.9	83	21	90	-0.7	86	-0.9	87	-\$189
MOYHU F Y102	MOYFY0102	-1.5	87	-5.4	74	0	87	2.5	82	-2.5	83	-\$314

## 2013 BORN WAGYU CALVES - AVERAGE EBVs

## 1991 - 2011 BORN

Gestation Length (days)	Birth Weight (kg)	200 Day Weight (kg)	400 Day Weight (kg)	600 Day Weight (kg)	Mature Cow Weight (kg)	Milk (kg)	Scrotal Size (cm)	Carcase Weight (kg)	Eye Musc Area (Sq. cm)	Rib Fat (mm)	Rump Fat (mm)	Retails Beef Yield (%)	Marble Score	Marbling Fineness	Fullblood Terminal Index (\$)
+0.1	+0.9	+9	+13	+17	+17	+1	-0.1	+11	+1.2	+0.3	+0.5	+0.0	+0.2	+0.02	+104

## Black Wagyu Sire Sorted by Carcase Weight

ANIMAL NAME	ANIMAL ID	MARBLE SCORE		MARBLE FINENESS (%)		CARCASE WEIGHT		EYE MUSCLE AREA (SQ. CM)		RUMP FAT (MM)		FB TERM INDX
		EBV	Acc.	EBV	Acc.	EBV	Acc.	EBV	Acc.	EBV	Acc.	
TAMARIND T4 ITOSHIGEFUJI 06/4	KT4FB0272	-0.4	87	-1.5	75	40	87	0.1	81	2.9	81	\$81
DALLROSE ITOSHIGEFUJI B2	AMWFB0002	-0.2	74	2.2	67	39	68	1.6	58	0.0	64	\$123
MAYURA D0454	ADBFD0454	0.4	86	-0.6	83	37	80	-3.9	78	2.7	78	\$244
WAGYU GENETICS ITOSHIGEFUJI A0555	WGWFA0555	0.5	78	0.3	70	36	75	-5.2	56	1.8	56	\$261
WESTHOLME HIRASHIGETAYASU Z278	WESFZ0278	0.6	74	-1.6	68	35	91	0.6	82	-2.7	89	\$281
ITOSHIGEFUJI (IMP USA)	IMUFQTF147	-0.7	97	-2.6	95	34	97	-6.9	95	1.9	95	-\$8
WAGYU GENETICS ITOSHIGEFUJI A0554	WGWFA0554	0.0	77	-1.4	72	34	72	-4.3	61	1.9	56	\$145
TAMARIND T4 ITOZURUDOI 07/1	KT4FC0426	-0.5	74	0.7	63	34	76	-0.2	71	0.6	74	\$34
LONGFORD LFDR8441	LFDA8441	0.2	80	1.1	65	33	76	-0.3	48	-0.7	49	\$183
COBUNGRA 5085	898FA0085	0.5	76	1.6	74	32	71	3.9	68	2.1	69	\$243
GINJO MARBLEMAX HIRANAMI B901	GINFB0901	0.7	77	0.0	64	32	80	-0.4	69	-0.3	53	\$286
WAGYU GENETICS KANEYAMA B613	WGWFB0613	-0.3	68	-2.1	63	31	65	2.2	56	1.5	54	\$68
BALD RIDGE ITOZURUDOI B205	CCCFB0205	0.2	83	1.9	69	31	86	1.3	80	0.5	80	\$174
TF MITSUHIKOKURA 43 (IMP USA)	IMUFQ3218	-0.1	64	-2.4	60	30	68	0.6	45	1.1	41	\$104
DIAMOND BRAND ICHIRYUNO Z626	DBDFZ0626	1.2	88	2.0	70	29	86	5.2	83	2.6	83	\$386
HAWKRIDGE AKIWAWA	ESKFU0005	0.1	76	0.4	65	29	75	-3.2	70	5.4	71	\$144
WAGYU GENETICS ITOSHIGENAMI A0557	WGWFA0557	0.7	79	0.0	68	29	76	-1.3	55	1.3	56	\$273
TF TERUTANI 40/1 (IMP USA)	IMUFR3258	0.3	91	2.0	85	27	94	-2.2	89	1.7	90	\$178
TF ITOHANA 2 (IMP USA)	IMUFN2294	0.6	92	2.4	88	25	94	-3.0	90	2.0	91	\$235
HIRASHIGETAYASU J2351 HONGEN (IMP JAP)	IMJFAJ2351	0.1	95	-2.6	89	25	97	0.3	96	-1.0	97	\$127
KURO KIN ITOSHIGENAMI D52	KKWFD0052	1.0	78	2.0	75	25	77	1.6	63	1.6	72	\$321
TF ITOMICHI 1/2 (IMP USA)	IMUFP0036	0.6	91	1.0	88	24	92	-8.0	88	4.1	89	\$233
COATES TERUTANI X0099	CCOFX0099	0.9	77	5.1	70	24	73	-0.7	58	1.5	56	\$296
MAYURA D403	ADBFD0403	0.8	82	2.8	78	24	77	3.2	75	2.7	75	\$274
ITOMORITAKA J2703 HONGEN (IMP JAP)	IMJFAJ2703	-0.7	92	-3.8	82	24	96	1.6	93	1.4	95	-\$51
ECHIGO FARMS F B1001	ECHFB1001	-0.2	74	-2.3	61	23	78	0.8	66	0.4	58	\$53
MAYURA F D0434	ADBFD0434	0.7	75	3.7	72	23	70	-1.5	67	1.7	68	\$247
MACQUARIE WAGYU Y408	BDWFO408	2.1	86	4.0	72	23	84	2.6	80	-4.4	80	\$548
KURO KIN ITOSHIGENAMI 15	KKWFB0326	0.6	77	0.2	73	22	76	-1.1	72	2.3	74	\$224
MACQUARIE WAGYU F C1306	BDWFC1306	-0.4	90	0.0	72	22	89	-1.5	81	-0.9	86	\$8
COBUNGRA 5002	898FA0002	0.2	82	2.5	78	22	77	5.8	72	-0.8	72	\$135
TF YUKIHARUNAMI 4 (IMP USA)	IMUFQ2599	-1.3	91	-2.9	83	21	90	-0.7	86	-0.9	87	-\$189
KURO KIN DM100 D22	KKWFD0022	0.6	77	0.5	74	20	75	2.9	59	-0.8	69	\$215
ITOZURUDOI TF151 (IMP USA)	IMUFLT151	0.5	94	3.9	91	20	95	1.1	93	0.8	94	\$191
WESTHOLME SEKIDOI (IMP USA)	WESFTH004	0.1	92	0.5	82	18	92	-0.5	88	-2.1	89	\$99
MACQUARIE WAGYU C1176	BDWFC1176	3.2	88	5.4	72	18	87	3.3	84	-2.1	84	\$763
YOKOZUNA SHIKIKAN 2	YOKFW0078	-0.1	72	-0.3	69	18	73	0.7	62	-0.2	52	\$55
LONGFORD LFDB1193	LFDFZ1193	0.3	81	0.2	71	18	79	-1.0	57	1.0	58	\$140
LONGFORD LFDB1195	LFDFZ1195	0.1	84	-0.4	73	18	82	-1.0	57	1.0	58	\$96
KURO KIN DM 100/4	KKWFB0364	0.4	84	1.7	82	18	81	-2.6	77	-1.4	78	\$160
COBUNGRA 5013	898FA0013	-0.4	86	-1.2	83	17	81	8.8	78	1.7	78	-\$13
SHER ZURUSHIGE B119	SWSFB0119	2.3	76	5.5	65	17	73	3.1	70	3.7	70	\$563
MAYURA D452	ADBFD0452	0.2	82	-0.8	80	16	76	-2.7	73	0.3	73	\$111
TWA ICHIRYUNO (IMP USA)	TWAFR0003	-0.4	91	-3.2	84	16	93	3.8	89	-0.3	90	-\$18
LONGFORD LFDR8439	LFDA8439	0.1	81	-0.7	73	15	78	-0.8	60	1.1	58	\$86
MAYURA ZULU	ADBFZ0025	0.2	96	-1.4	95	15	95	0.4	94	0.8	94	\$107
MACQUARIE WAGYU X370	BDWFX0370	0.1	87	0.4	68	15	85	-0.9	79	-0.9	82	\$85

## Black Wagyu Sire Sorted by Carcase Weight

ANIMAL NAME	ANIMAL ID	MARBLE SCORE		MARBLE FINENESS (%)		CARCASE WEIGHT		EYE MUSCLE AREA (SQ. CM)		RUMP FAT (MM)		FB TERM INDX
		EBV	Acc.	EBV	Acc.	EBV	Acc.	EBV	Acc.	EBV	Acc.	
LONGFORD ITOZURUDOI B558	LDFDZ0558	0.0	81	0.3	70	15	80	0.1	62	1.3	68	\$62
MAYURA ITOSHIGENAMI JNR	ADBFA0139	2.5	95	3.4	93	15	92	8.6	91	-0.6	91	\$596
WESTHOLME ITOSHIGEZURU 1 A0413	AACFA0413	0.6	77	0.4	68	15	87	0.6	80	2.9	85	\$190
LONGFORD LFDR8425	LFDFA8425	0.0	83	-0.6	72	14	81	-1.1	57	1.2	58	\$59
EXCEL SURUKIKU B0004	EXLFB0004	-0.7	80	-5.5	76	14	76	-0.1	64	0.8	55	-\$91
MAYURA ADMIRAL A0113	ADBFA0113	1.6	87	2.2	84	13	83	3.9	80	0.5	80	\$398
MAYURA D0427	ADBFD0427	1.3	81	1.0	76	12	77	-1.5	73	-1.7	74	\$330
MAYURA D0410	ADBFD0410	0.5	87	2.5	83	12	83	-4.9	80	3.5	80	\$159
LONGFORD LFDB556	LDFDZ0556	0.0	80	3.0	73	12	77	0.2	55	0.7	52	\$51
MOYHU F D517	MOYFD0517	0.0	80	-1.5	77	12	76	1.3	64	-1.7	73	\$51
LONGFORD F X138	LDFDX0138	0.7	83	0.5	69	12	80	0.3	51	-1.0	53	\$198
MAYURA ZEUS	ADBZF0035	1.3	81	0.2	77	11	77	-1.2	74	2.8	74	\$325
YOKOZUNA TANI X353	YOKFX0353	0.4	72	1.2	69	11	71	0.5	59	1.4	55	\$134
MAYURA D489	ADBFD0489	1.2	80	1.2	75	11	75	4.3	72	-3.9	72	\$303
GINJO MARBLEMAX Z285	GINFZ0285	0.6	72	0.4	69	11	72	-3.2	61	1.9	56	\$175
TF ITOHANA 38/14 (IMP USA)	IMUFRTF96	-0.1	85	0.7	71	10	83	0.2	78	2.8	79	\$23
GOSHU FUKUZAKI	GOSFC0457	-0.4	93	2.6	83	10	91	0.5	88	0.8	89	-\$42
LONGFORD B8772	LDFDB8772	0.4	79	1.5	66	10	76	1.1	54	0.5	56	\$127
SHERRALOY BAROZA	DGCFW0101	0.2	62	1.5	60	10	57	-2.0	54	3.8	54	\$84
TAKEDA FARM FUKUTSURU 004	TFWF0629	0.8	85	2.6	77	10	88	-1.6	82	4.2	85	\$210
MACQUARIE WAGYU C1214	BDWFC1214	1.0	83	3.3	70	8	80	0.8	75	2.4	77	\$247
MAYURA ACCLAIM	ADBFA0144	1.2	79	1.0	76	8	73	1.5	68	0.8	68	\$287
LONGFORD LFDR8323	LFDFA8323	0.6	77	2.7	67	8	75	2.4	53	0.7	49	\$160
MOYHU ICHIRYUNO A244	MOYFA0244	-0.2	77	-1.2	73	7	77	1.9	70	-0.7	71	-\$12
LONGFORD F X180	LDFDX0180	-0.4	77	-1.8	65	7	74	1.3	57	-1.0	59	-\$55
MAZDA WAGYU DAMEIN	MWSFW0262	1.2	59	1.1	58	6	57	0.3	55	1.5	55	\$281
LONGFORD LFDR8302	LFDFA8302	1.4	83	1.7	71	6	80	3.7	57	1.0	58	\$322
LONGFORD LFDB1200	LDFDZ1200	0.1	73	0.4	66	5	70	2.0	54	-0.1	54	\$42
DIAMOND BRAND ICHIRYUNO Z680	DBDFZ0680	0.2	82	-0.2	67	4	79	2.9	71	3.5	72	\$61
MOYHU F D508	MOYFD0508	0.8	74	0.1	72	4	70	2.4	59	2.5	68	\$185
WESTHOLME KAIHOU	WESFZ0169	0.1	80	-0.1	64	4	88	-0.2	81	0.9	85	\$38
LISNAGARVEY KANEHANA B024	LISFB0024	0.1	73	-1.4	62	4	75	2.3	69	1.9	71	\$36
MAYURA D0482	ADBFD0482	2.1	83	4.8	81	3	78	6.0	76	-2.2	76	\$457
ITOSHIGENAMI (IMP USA)	IMUFQTF148	2.0	97	1.4	95	3	97	1.8	96	1.6	96	\$434
LONGFORD LFDB1194	LDFDZ1194	-0.2	82	-1.0	73	2	80	-1.1	60	1.5	58	-\$34
WESTHOLME ITOSHIGEFUKU	AACFB0462	1.6	75	3.0	67	1	86	3.0	80	0.6	85	\$338
MOYHU F Y102	MOYFY0102	-1.5	87	-5.4	74	0	87	2.5	82	-2.5	83	-\$314
BAR R SANJIRO 4P (IMP USA)	IMUFY5663	0.5	77	2.2	73	-1	78	4.3	67	-0.6	73	\$102
TAKEDA FARM FUKUTSURU 003	TFWF0627	0.2	81	0.7	78	-1	74	-3.2	71	7.4	71	\$39
WORLD K'S MICHITSURU	WKSFU0006	0.4	78	1.5	71	-2	72	9.3	66	-0.5	64	\$75
WORLD K'S MICHIFUKU	WKSFM0164	1.4	97	4.4	95	-3	98	8.0	96	0.0	97	\$280
EXCEL HIRAKITADOI A0009	EXLFA0009	-0.2	77	-3.7	73	-3	71	1.1	64	-0.6	57	-\$55
KINTO MICHIFUKU V2085	KTOFV2085	-0.1	86	2.1	77	-3	84	2.4	68	1.7	56	-\$35
WORLD K'S YASUFUKU JR	WKSFS0100	0.3	92	-1.5	89	-4	92	5.7	88	1.1	90	\$47
LONGFORD 464	LDFDZ0464	-0.1	77	0.7	66	-4	74	0.4	54	2.1	56	-\$39
WESTHOLME TERUKITAGUNE-DOI	WESFA0120	0.6	80	2.1	74	-4	85	0.9	76	-0.5	81	\$107
LONGFORD LFDR8316	LFDFA8316	0.0	78	0.3	65	-5	75	0.0	47	1.7	42	-\$20

## Black Wagyu Sire Sorted by Carcase Weight

ANIMAL NAME	ANIMAL ID	MARBLE SCORE		MARBLE FINENESS (%)		CARCASE WEIGHT		EYE MUSCLE AREA (SQ. CM)		RUMP FAT (MM)		FB TERM INDX
		EBV	Acc.	EBV	Acc.	EBV	Acc.	EBV	Acc.	EBV	Acc.	
FUKUTSURU J068 (IMP JAP)	IMJFMJ068	0.5	94	3.8	89	-5	95	0.1	92	5.8	92	\$83
MACQUARIE WAGYU Y512	BDWFO512	1.7	85	3.3	73	-5	82	2.4	78	-0.2	78	\$334
SHER F B033	SWSFB0033	-0.3	79	-0.1	70	-5	74	3.7	72	-0.4	72	-\$84
GOSHU FUKUNAGA	GOSFB0404	0.0	92	0.6	84	-5	91	3.5	87	4.3	89	-\$23
SHADAI FARM SHIGEDO I	SFWFD0144	0.5	54	0.2	52	-6	51	0.2	48	1.5	48	\$81
KITATSURUKIKU DOI (IMP JAP)	IMJFQ3161	-0.4	86	-3.4	78	-6	92	-1.1	86	1.2	90	-\$110
GOSHU SANJO SANETOMI	GOSFB0390	-0.5	86	-1.8	77	-6	82	4.8	75	-0.4	76	-\$131
GOSHU FUKUMURA	GOSFB0377	0.6	61	2.0	58	-7	56	1.2	54	2.5	55	\$97
LONGFORD LFDR8330	LFDA8330	0.7	85	0.8	74	-7	83	3.7	60	1.0	58	\$118
WORLD K'S SANJIROU	WKSFP0100	0.7	96	0.5	95	-7	95	9.1	93	-2.5	93	\$117
WESTHOLME TERUAKITSUKI (IMP USA)	WESFX0179	0.5	59	-0.5	55	-7	76	-0.1	64	-2.5	74	\$73
LONGFORD 005	LFDFY0005	2.1	82	3.9	71	-8	78	3.3	58	-1.0	59	\$405
KURO KIN KATSUMI 4	KKWFA0868	0.6	75	1.3	67	-8	74	0.6	62	1.4	67	\$92
MACQUARIE WAGYU Y526	BDWFO526	-0.7	90	-0.8	71	-8	89	2.2	86	-0.9	87	-\$178
SUMO CATTLE CO TERUTANI D024	SMOFD0024	-0.5	80	0.3	77	-8	77	0.2	68	1.1	74	-\$138
MAYURA EMPEROR	ADBFE0172	1.0	78	1.5	75	-9	73	4.5	71	0.3	70	\$171
LONGFORD 004	LFDFY0004	2.0	84	3.7	72	-9	83	3.6	62	-0.1	70	\$378
KITATERUYASUDO I J2810 HONGEN (IMP JAP)	IMJFAJ2810	1.1	96	1.1	92	-10	98	1.2	97	-2.9	97	\$188
KINTO SHIKI Y5012	KTOFY5012	1.3	83	2.1	75	-10	80	1.5	69	0.9	60	\$226
TERUTANI J2494 TF40 (IMP JAP)	IMUFJT40	-0.1	87	-0.2	80	-10	88	1.5	82	-0.2	84	-\$65
GOSHU MICHITARO	GOSFU0083	0.8	79	3.1	75	-11	81	4.7	71	-0.6	75	\$119
GOSHU FUKUTOMI	GOSFB0400	-1.3	92	1.6	84	-12	90	1.4	87	2.0	87	-\$319
MOYHU F D0512	MOYFD0512	2.2	77	3.2	74	-12	73	2.0	67	-2.5	70	\$405
LONGFORD LFDR8421	LFDA8421	-0.3	64	-0.3	59	-13	59	2.1	53	0.0	55	-\$117
WESTHOLME TERUKATSURIKI-DOI	WESFZ0104	0.6	78	1.1	70	-14	84	-1.0	74	-1.1	80	\$67
WESTHOLME HIRASHIGETAMANA	WESFA0107	-0.6	87	-2.9	77	-14	90	-0.2	84	0.5	85	-\$182
GOSHU SANAGU	GOSFB0419	-1.1	88	-3.3	80	-15	86	7.1	78	-0.4	83	-\$292
SHIGEFUKU J1822 (IMP JAP)	IMJFF0005	0.0	85	-1.8	74	-17	90	-2.6	83	0.5	86	-\$71
OVERFLOW KATSUMI (IMP USA)	WSRFS0060	1.3	82	3.3	74	-18	92	3.0	82	-0.1	89	\$192
MOYHU F D507	MOYFD0507	1.5	78	3.0	75	-18	74	2.3	60	-0.3	71	\$232
GOSHU SANAMI	GOSFB0410	0.3	93	-1.1	84	-19	92	4.7	88	-4.3	88	-\$19
GOSHU SANAKA	GOSFB0417	-0.9	86	-1.8	81	-21	83	4.0	77	1.1	79	-\$272
TWA SHIKIKAN (IMP USA)	TWAFR0007	0.8	90	1.2	84	-21	93	1.7	85	-0.8	88	\$74
KIKUTERUSHIGE (IMP USA)	IMUFMTF150	-0.8	93	0.3	88	-32	95	1.4	91	0.4	93	-\$299

### 2013 BORN WAGYU CALVES - AVERAGE EBVs

### 1991 - 2011 BORN

Gestation Length (days)	Birth Weight (kg)	200 Day Weight (kg)	400 Day Weight (kg)	600 Day Weight (kg)	Mature Cow Weight (kg)	Milk (kg)	Scrotal Size (cm)	Carcase Weight (kg)	Eye Musc Area (Sq. cm)	Rib Fat (mm)	Rump Fat (mm)	Retails Beef Yield (%)	Marble Score	Marbling Fineness	Fullblood Terminal Index (\$)
+0.1	+0.9	+9	+13	+17	+17	+1	-0.1	+11	+1.2	+0.3	+0.5	+0.0	+0.2	+0.02	+104

**Red Wagyu - Sires Sorted Alphabetically**

ANIMAL NAME	ANIMAL ID	MARBLE SCORE		MARBLE FINENESS (%)		CARCASS WEIGHT		EYE MUSCLE AREA (SQ. CM)		RUMP FAT (MM)		FB TERM INDX
		EBV	Acc.	EBV	Acc.	EBV	Acc.	EBV	Acc.	EBV	Acc.	
ASHWOOD F X014	HS FX0014	0.5	72	0.0	58	70	84	0.1	76	-0.5	82	\$411
HEART BRAND RED EMPEROR (IMP USA)	HBCFV2139	-0.3	53	0.2	44	22	80	-0.6	61	-0.6	71	\$29
HIKARI J251830R (IMP JAP)	IMUFN2455	-0.1	53	-1.4	43	43	72	-0.4	51	-0.1	60	\$160
KINTO RED B608	KTOFB0608	-0.4	52	-1.7	39	33	52	-1.0	38	0.4	34	\$53

**Red Wagyu - Sires Sorted By Fullblood Terminal Index**

ANIMAL NAME	ANIMAL ID	MARBLE SCORE		MARBLE FINENESS (%)		CARCASS WEIGHT		EYE MUSCLE AREA (SQ. CM)		RUMP FAT (MM)		FB TERM INDX
		EBV	Acc.	EBV	Acc.	EBV	Acc.	EBV	Acc.	EBV	Acc.	
ASHWOOD F X014	HS FX0014	0.5	72	0.0	58	70	84	0.1	76	-0.5	82	\$411
HIKARI J251830R (IMP JAP)	IMUFN2455	-0.1	53	-1.4	43	43	72	-0.4	51	-0.1	60	\$160
KINTO RED B608	KTOFB0608	-0.4	52	-1.7	39	33	52	-1.0	38	0.4	34	\$53
HEART BRAND RED EMPEROR (IMP USA)	HBCFV2139	-0.3	53	0.2	44	22	80	-0.6	61	-0.6	71	\$29

**Red Wagyu - Sires Sorted By Marble Score**

ANIMAL NAME	ANIMAL ID	MARBLE SCORE		MARBLE FINENESS (%)		CARCASS WEIGHT		EYE MUSCLE AREA (SQ. CM)		RUMP FAT (MM)		FB TERM INDX
		EBV	Acc.	EBV	Acc.	EBV	Acc.	EBV	Acc.	EBV	Acc.	
ASHWOOD F X014	HS FX0014	0.5	72	0.0	58	70	84	0.1	76	-0.5	82	\$411
HIKARI J251830R (IMP JAP)	IMUFN2455	-0.1	53	-1.4	43	43	72	-0.4	51	-0.1	60	\$160
HEART BRAND RED EMPEROR (IMP USA)	HBCFV2139	-0.3	53	0.2	44	22	80	-0.6	61	-0.6	71	\$29
KINTO RED B608	KTOFB0608	-0.4	52	-1.7	39	33	52	-1.0	38	0.4	34	\$53

**Red Wagyu - Sires Sorted By Carcass Weight**

ANIMAL NAME	ANIMAL ID	MARBLE SCORE		MARBLE FINENESS (%)		CARCASS WEIGHT		EYE MUSCLE AREA (SQ. CM)		RUMP FAT (MM)		FB TERM INDX
		EBV	Acc.	EBV	Acc.	EBV	Acc.	EBV	Acc.	EBV	Acc.	
ASHWOOD F X014	HS FX0014	0.5	72	0.0	58	70	84	0.1	76	-0.5	82	\$411
HIKARI J251830R (IMP JAP)	IMUFN2455	-0.1	53	-1.4	43	43	72	-0.4	51	-0.1	60	\$160
KINTO RED B608	KTOFB0608	-0.4	52	-1.7	39	33	52	-1.0	38	0.4	34	\$53
HEART BRAND RED EMPEROR (IMP USA)	HBCFV2139	-0.3	53	0.2	44	22	80	-0.6	61	-0.6	71	\$29

**2013 BORN WAGYU CALVES - AVERAGE EBVs**

Gestation Length (days)	Birth Weight (kg)	200 Day Weight (kg)	400 Day Weight (kg)	600 Day Weight (kg)	Mature Cow Weight (kg)	Milk (kg)	Scrotal Size (cm)	Carcass Weight (kg)	Eye Musc Area (Sq. cm)	Rib Fat (mm)	Rump Fat (mm)	Retails Beef Yield (%)
+0.1	+0.9	+9	+13	+17	+17	+1	-0.1	+11	+1.2	+0.3	+0.5	+0.0

**1991 - 2011 BORN**

Marble Score	Marbling Fineness	Fullblood Terminal Index (\$)
+0.2	+0.02	+104



## Black Wagyu TOP 100 DAMS for Fullblood Terminal Index

ANIMAL NAME	ANIMAL ID	MARBLE SCORE		MARBLE FINENESS (%)		CARCASE WEIGHT		EYE MUSCLE AREA (SQ. CM)		RUMP FAT (MM)		FB TERM INDX
		EBV	Acc.	EBV	Acc.	EBV	Acc.	EBV	Acc.	EBV	Acc.	
KURO KIN DAI 2 KINNTOU 5	KKWFA0861	2.3	68	2.8	66	23	72	2.6	60	0.3	65	\$595
MACQUARIE WAGYU F W191	BDWFW0191	2.0	72	2.7	63	28	73	2.0	68	-1.4	73	\$553
MACQUARIE WAGYU C1624	BDWFC1624	1.8	70	3.7	58	22	63	1.7	59	-2.4	60	\$483
WAGYU GENETICS DAI 2 KINNTOU D8341	WGWFD8341	1.9	67	2.3	66	15	61	0.9	59	2.3	60	\$469
KURO KIN HIKOHIME 13	KKFW0744	1.8	79	3.7	71	19	78	2.6	68	0.4	69	\$466
ROSEVALE Y150	ROSFY0150	1.3	70	2.0	64	42	64	0.1	54	0.4	55	\$465
MACQUARIE WAGYU F D2041	BDWFD2041	1.9	61	3.9	52	13	55	2.1	47	-0.7	52	\$461
SAMURAI FARMS ITOCHIYO C526	SF FC0526	1.8	68	2.5	66	17	62	1.0	60	0.8	60	\$457
MAYURA MICHOTAKE 2/2	ADBFX0161	1.9	68	5.0	65	7	64	4.6	61	0.5	62	\$430
SAMURAI FARMS ITOCHIYO B120	SF FB0120	1.8	71	2.1	69	10	65	1.3	63	0.5	63	\$425
MACQUARIE WAGYU C1452	BDWFC1452	1.6	62	2.7	52	17	58	2.2	54	0.0	55	\$414
BLACKMORE SUZUTANI W104A	BYFW104A	1.9	71	3.2	66	3	66	3.3	62	-0.3	64	\$414
MACQUARIE WAGYU C1627	BDWFC1627	1.6	61	2.2	52	16	57	1.7	54	-3.0	55	\$411
SAMURAI FARMS ITOCHIYO B196	SF FB0196	1.7	66	2.1	63	12	62	0.3	60	0.3	60	\$411
SAMURAI FARMS ITOCHIYO B121	SF FB0121	1.6	67	1.8	65	16	62	1.7	60	0.9	60	\$410
MACQUARIE WAGYU C1589	BDWFC1589	1.5	70	4.2	64	20	66	3.4	63	-0.3	64	\$409
SAMURAI FARMS ITOCHIYO C150	SF FC0150	1.7	66	2.2	62	11	61	0.8	60	0.2	60	\$409
MAYURA F Y0031	ADBFY0031	1.5	68	2.1	66	20	61	-0.8	59	1.3	60	\$406
WAGYU GENETICS AIZAKURA D8331	WGWFD8331	1.7	66	3.0	64	10	61	3.1	58	0.8	59	\$405
SAMURAI FARMS DAI 2 KINNTOU B153	SF FB0153	1.7	63	3.1	61	10	58	0.5	57	2.3	57	\$404
MACQUARIE WAGYU F D2072	BDWFD2072	1.4	65	2.5	54	24	61	4.2	58	0.0	59	\$403
MACQUARIE WAGYU F D2074	BDWFD2074	1.5	68	4.4	62	19	64	4.8	61	-0.4	62	\$401
MACQUARIE WAGYU F Z561	BDWFZ0561	1.1	68	3.3	60	37	66	2.0	62	-1.1	64	\$398
WESTHOLME SHIRAKI	WESFX0414	1.2	71	1.2	61	31	76	3.0	67	-0.9	74	\$394
WAGYU GENETICS DAI 2 KINNTOU D8409	WGWFD8409	1.7	65	2.2	63	8	60	2.6	57	1.3	58	\$394
MACQUARIE WAGYU E2338	BDWFE2338	1.5	67	4.3	62	17	63	4.7	61	0.1	62	\$393
SAMURAI FARMS SUZUTANI C148	SF FC0148	1.6	66	2.5	64	12	61	2.1	59	0.0	59	\$393
SHADAI FARM KENSEI C0006	SFWFC0006	1.4	66	1.5	64	22	61	-0.1	59	0.9	59	\$393
MACQUARIE WAGYU F B1088	BDWFB1088	1.5	63	3.5	55	16	58	2.5	55	-1.1	53	\$389
MACQUARIE WAGYU Y403	BDWFY0403	1.5	77	2.8	66	16	73	0.8	69	-2.1	70	\$389
MACQUARIE WAGYU F B1089	BDWFB1089	1.3	64	1.1	57	25	59	2.3	56	-2.8	52	\$388
EXCEL KEIKI (IMP USA)	EXLFX1032	1.2	66	1.7	62	30	65	0.0	59	-1.2	57	\$388
MACQUARIE WAGYU C1437	BDWFC1437	1.3	67	3.7	60	24	61	2.2	54	-2.6	55	\$384
MACQUARIE WAGYU F Z708	BDWFZ0708	1.7	69	2.3	62	6	66	0.1	62	1.3	63	\$384
KURO KIN HIKOHIME 56	KKWFX0947	1.5	66	3.1	64	15	66	3.7	61	1.6	62	\$383
MACQUARIE WAGYU F D2124	BDWFD2124	1.5	68	4.9	64	15	63	4.1	61	0.2	62	\$382
SAMURAI FARMS KINU C114	SF FC0114	1.7	65	3.4	63	5	60	1.5	59	0.3	59	\$382
EXCEL KITASAYOKO (IMP USA)	EXLFX1046	1.2	66	1.8	62	28	65	1.0	59	-1.1	57	\$381
MACQUARIE WAGYU D2030	BDWFD2030	1.1	66	2.7	56	33	60	1.2	56	-3.5	57	\$380
SAMURAI FARMS SUZUTANI C192	SF FC0192	1.6	65	2.0	63	9	61	1.6	59	1.2	59	\$377
EXCEL MAYU (IMP USA)	EXLFX1105	1.1	66	1.8	62	32	64	0.7	59	-1.3	57	\$375
GOSHU ITOKU	GOSFX0254	1.7	69	2.5	67	4	64	3.7	62	0.8	62	\$373
SAMURAI FARMS AZUSA B164A (IMP USA)	SF FB164A	1.5	64	2.5	61	13	57	0.6	55	2.0	56	\$373
MACQUARIE WAGYU C1678	BDWFC1678	1.6	71	4.1	64	8	67	3.8	64	-0.4	64	\$371
MACQUARIE WAGYU F D1980	BDWFD1980	1.5	67	3.3	62	12	65	4.8	62	-1.2	64	\$371
MACQUARIE WAGYU C1674	BDWFC1674	1.6	69	4.1	63	7	64	4.2	62	-1.4	63	\$370
MACQUARIE WAGYU F B1048	BDWFB1048	1.4	71	1.6	63	16	67	1.2	64	-2.3	66	\$368

## Black Wagyu TOP 100 DAMS for Fullblood Terminal Index

ANIMAL NAME	ANIMAL ID	MARBLE SCORE		MARBLE FINENESS (%)		CARCASS WEIGHT		EYE MUSCLE AREA (SQ. CM)		RUMP FAT (MM)		FB TERM INDX
		EBV	Acc.	EBV	Acc.	EBV	Acc.	EBV	Acc.	EBV	Acc.	
YOKOZUNA TANI X396	YOKFX0396	1.3	72	4.2	68	21	68	0.6	63	1.1	55	\$368
BLACKMORE SUZUTANI W105A	BYWFW0105	1.8	67	2.9	63	-3	63	3.8	61	0.3	61	\$366
MACQUARIE WAGYU F Z736	BDWFZ0736	1.4	66	3.1	56	16	60	0.3	56	1.1	57	\$365
MAYURA CHIYOTAKE Y218	ADBFY0218	1.3	66	1.5	64	20	61	0.8	58	0.9	58	\$364
WAGYU GENETICS HIKOHIME D8346	WGWF8346	1.4	67	1.0	64	15	61	2.2	55	1.6	56	\$363
MACQUARIE WAGYU F D2000	BDWFD2000	1.6	61	4.1	54	6	55	2.8	53	-0.7	53	\$362
SANJOLINCEY F D250	JASFD0250	1.5	64	3.4	60	10	60	4.0	58	1.0	59	\$359
SAMURAI FARMS KINNTOU B293	SF FB0293	1.5	65	2.3	63	10	60	0.2	58	1.4	58	\$359
SAMURAI FARMS CHIKAZUKI C415	SF FC0415	1.4	64	2.1	62	13	61	2.2	59	0.0	59	\$356
MACQUARIE WAGYU F D1766	BDWFD1766	1.1	65	3.1	59	27	64	1.5	60	-0.7	62	\$354
BALD RIDGE SAKAN B239	CCCFB0239	1.5	65	1.4	63	8	62	0.7	60	-0.2	60	\$351
SAMURAI FARMS D325	SF FD0325	1.7	69	4.2	67	-1	62	5.9	61	1.1	61	\$351
SAMURAI FARMS D146	SF FD0146	1.4	73	0.9	71	12	66	0.0	64	1.2	64	\$350
SUMO MACHI W1877	SUMPW1877	0.9	61	1.9	59	36	57	-3.8	48	1.9	49	\$350
SAMURAI FARMS DAI 2 KINNTOU C188	SF FC0188	1.2	69	2.3	67	21	64	-0.1	62	2.0	62	\$349
SAMURAI FARMS CHIYOTAKE C504	SF FC0504	1.4	64	3.3	63	11	61	4.2	59	-0.3	59	\$346
KURO KIN HIKOHIME 87	KKWFA0869	1.7	69	4.3	64	-3	72	2.7	57	-0.2	64	\$345
WAGYU GENETICS HIKOHIME D8326	WGWF8326	1.3	68	0.7	66	16	62	4.0	60	0.8	60	\$345
WAGYU GENETICS HIKOHIME D8396	WGWF8396	1.4	68	2.5	65	11	64	1.8	61	1.2	61	\$344
MACQUARIE WAGYU C1419	BDWFC1420	1.2	56	1.8	50	20	52	1.5	48	-2.6	49	\$342
SAMURAI FARMS AZUSA C050 (IMP USA)	SF FC0050	1.4	63	2.5	61	10	58	0.6	56	2.5	56	\$342
SAMURAI FARMS CHIKAZUKI C449	SF FC0449	1.3	64	1.8	62	15	61	1.3	59	1.6	59	\$342
MACQUARIE WAGYU E2218	BDWFE2218	1.2	70	3.6	64	20	66	4.4	63	-0.8	64	\$341
MAYURA TETUFUKU Y181	ADBFY0181	1.2	63	0.9	60	19	60	-0.1	58	1.7	58	\$340
SAMURAI FARMS KINNTOU B105	SF FB0105	1.2	70	0.9	68	19	64	0.8	62	0.9	62	\$339
MAYURA HIKOHIME Y249	ADBFY0249	1.1	69	1.2	65	23	64	0.8	61	0.7	62	\$337
MACQUARIE WAGYU C1506	BDWFC1506	1.4	65	2.4	56	9	59	4.4	55	1.0	56	\$337
MACQUARIE WAGYU F X253	BDWFX0253	1.1	70	1.1	61	23	73	0.9	65	-1.6	72	\$336
MACQUARIE WAGYU F D1821	BDWFD1821	0.8	68	1.6	64	37	63	-1.5	60	0.0	61	\$334
MACQUARIE WAGYU F Z673	BDWFZ0673	1.2	71	1.1	65	18	68	2.3	65	1.6	65	\$333
SAMURAI FARMS D042	SF FD0042	1.0	63	2.9	61	27	53	4.0	50	1.4	50	\$333
MANSEI KITAKEIHIME (IMP USA)	MANFV2109	1.1	66	2.3	62	22	64	0.5	56	-0.9	57	\$331
MACQUARIE WAGYU F D2136	BDWFD2136	1.0	62	2.3	52	27	58	-1.1	54	3.5	54	\$329
SAMURAI FARMS KINTOU C083 (IMP USA)	SF FC0083	1.3	65	2.1	63	12	61	-1.0	58	1.8	59	\$328
SAMURAI FARMS CHIKAZUKI C430	SF FC0430	1.3	64	2.1	62	12	60	1.7	58	0.4	59	\$328
LONGFORD B8618	LFDFB8618	1.4	65	0.5	62	7	62	1.6	59	0.6	56	\$326
KURO KIN HIKOHIME 69	KKWFZ0783	1.2	63	4.0	59	15	68	0.7	56	1.2	59	\$322
SAMURAI FARMS D100	SF FD0100	1.2	67	1.6	66	15	61	-1.8	60	1.9	60	\$322
EXCEL MAYUMI (IMP USA)	EXLFX1139	0.9	66	1.8	62	30	65	0.1	59	-1.2	57	\$321
SAMURAI FARMS ITOCHIYO B284	SF FB0284	1.3	72	1.4	70	11	66	0.7	64	0.6	63	\$321
EXCEL ITOKANE	EXLFX1009	0.8	64	-0.4	60	34	63	0.9	59	-1.3	56	\$320
MACQUARIE WAGYU F X358	BDWFX0358	0.7	78	1.9	65	39	76	-0.6	69	-0.8	71	\$319
SAMURAI FARMS KINU C598	SF FC0598	1.4	66	4.2	64	5	61	3.7	59	0.3	59	\$319
MAYURA F D418	ADBF0418	1.0	71	2.4	68	24	64	0.8	59	1.5	60	\$318
EXCEL KITAKAYOKO (IMP USA)	EXLFX1038	1.0	60	1.6	57	24	62	0.5	56	-1.1	57	\$318
SAMURAI FARMS CHIKAZUKI C384	SF FC0384	1.3	59	1.8	58	10	56	1.7	55	0.7	56	\$318
PASAGEAN HIKOKURA T095-Y7244	7GHFY7244	1.1	63	0.8	61	19	73	-3.0	63	0.9	71	\$317

## Black Wagyu TOP 100 DAMS for Fullblood Terminal Index

ANIMAL NAME	ANIMAL ID	MARBLE SCORE		MARBLE FINENESS (%)		CARCASE WEIGHT		EYE MUSCLE AREA (SQ. CM)		RUMP FAT (MM)		FB TERM INDX
		EBV	Acc.	EBV	Acc.	EBV	Acc.	EBV	Acc.	EBV	Acc.	
LISNAGARVEY C052	LISFC0052	1.0	65	0.6	62	24	60	-0.8	57	1.0	59	\$316
WAGYU GENETICS KENSEI D8364	WGWFD8364	1.3	66	1.8	64	10	61	4.7	59	1.9	59	\$316
WAGYU GENETICS HIKOHIME B0646	WGWFB0646	1.2	63	1.6	61	14	60	1.8	58	1.2	58	\$315
MAYURA Y0026	ADBFY0026	0.9	71	0.8	68	28	67	-0.5	64	-1.0	65	\$314
SAMURAI FARMS SUZUNAMI C501	SF FC0501	1.6	59	1.6	56	-5	58	0.2	53	-0.2	56	\$314
MACQUARIE WAGYU C1358	BDWFC1358	0.7	65	1.6	55	37	63	-0.3	56	-0.2	61	\$312
KURO KIN HIKOHIME 19	KKWFW0754	0.7	65	2.4	59	37	68	-1.7	58	1.7	64	\$312
SAMURAI FARMS CHIKAZUKI C446	SF FC0446	1.3	65	1.7	63	9	60	0.9	59	0.6	59	\$312
WAGYU GENETICS DAI 2 KINNTOU D8363	WGWFD8363	1.2	69	1.3	66	13	62	3.3	59	-0.2	60	\$312

## Black Wagyu TOP 100 DAMS for Marble Score

ANIMAL NAME	ANIMAL ID	MARBLE SCORE		MARBLE FINENESS (%)		CARCASE WEIGHT		EYE MUSCLE AREA (SQ. CM)		RUMP FAT (MM)		FB TERM INDX
		EBV	Acc.	EBV	Acc.	EBV	Acc.	EBV	Acc.	EBV	Acc.	
KURO KIN DAI 2 KINNTOU 5	KKWFA0861	2.3	68	2.8	66	23	72	2.6	60	0.3	65	\$595
MACQUARIE WAGYU F W191	BDWFW0191	2.0	72	2.7	63	28	73	2.0	68	-1.4	73	\$553
WAGYU GENETICS DAI 2 KINNTOU D8341	WGWFD8341	1.9	67	2.3	66	15	61	0.9	59	2.3	60	\$469
MACQUARIE WAGYU F D2041	BDWFD2041	1.9	61	3.9	52	13	55	2.1	47	-0.7	52	\$461
MAYURA MICHOTAKE 2/2	ADBFX0161	1.9	68	5.0	65	7	64	4.6	61	0.5	62	\$430
BLACKMORE SUZUTANI W104A	BYWFW104A	1.9	71	3.2	66	3	66	3.3	62	-0.3	64	\$414
MACQUARIE WAGYU C1624	BDWFC1624	1.8	70	3.7	58	22	63	1.7	59	-2.4	60	\$483
KURO KIN HIKOHIME 13	KKWFW0744	1.8	79	3.7	71	19	78	2.6	68	0.4	69	\$466
SAMURAI FARMS ITOCHIYO C526	SF FC0526	1.8	68	2.5	66	17	62	1.0	60	0.8	60	\$457
SAMURAI FARMS ITOCHIYO B120	SF FB0120	1.8	71	2.1	69	10	65	1.3	63	0.5	63	\$425
BLACKMORE SUZUTANI W105A	BYWFW0105	1.8	67	2.9	63	-3	63	3.8	61	0.3	61	\$366
SAMURAI FARMS ITOCHIYO B196	SF FB0196	1.7	66	2.1	63	12	62	0.3	60	0.3	60	\$411
SAMURAI FARMS ITOCHIYO C150	SF FC0150	1.7	66	2.2	62	11	61	0.8	60	0.2	60	\$409
WAGYU GENETICS AIZAKURA D8331	WGWFD8331	1.7	66	3.0	64	10	61	3.1	58	0.8	59	\$405
SAMURAI FARMS DAI 2 KINNTOU B153	SF FB0153	1.7	63	3.1	61	10	58	0.5	57	2.3	57	\$404
WAGYU GENETICS DAI 2 KINNTOU D8409	WGWFD8409	1.7	65	2.2	63	8	60	2.6	57	1.3	58	\$394
MACQUARIE WAGYU F Z708	BDWFZ0708	1.7	69	2.3	62	6	66	0.1	62	1.3	63	\$384
SAMURAI FARMS KINU C114	SF FC0114	1.7	65	3.4	63	5	60	1.5	59	0.3	59	\$382
GOSHU ITOKU	GOSFX0254	1.7	69	2.5	67	4	64	3.7	62	0.8	62	\$373
SAMURAI FARMS D325	SF FD0325	1.7	69	4.2	67	-1	62	5.9	61	1.1	61	\$351
KURO KIN HIKOHIME 87	KKWFA0869	1.7	69	4.3	64	-3	72	2.7	57	-0.2	64	\$345
SAMURAI FARMS SUZUNAMI C603	SF FC0603	1.7	58	1.8	-51	13	57	1.8	53	0.0	56	\$298
SAMURAI FARMS SUZUNAMI C538	SF FC0538	1.7	64	1.3	-60	16	61	-0.1	57	-0.4	59	\$283
MACQUARIE WAGYU C1452	BDWFC1452	1.6	62	2.7	52	17	58	2.2	54	0.0	55	\$414
MACQUARIE WAGYU C1627	BDWFC1627	1.6	61	2.2	52	16	57	1.7	54	-3.0	55	\$411
SAMURAI FARMS ITOCHIYO B121	SF FB0121	1.6	67	1.8	65	16	62	1.7	60	0.9	60	\$410
SAMURAI FARMS SUZUTANI C148	SF FC0148	1.6	66	2.5	64	12	61	2.1	59	0.0	59	\$393
SAMURAI FARMS SUZUTANI C192	SF FC0192	1.6	65	2.0	63	9	61	1.6	59	1.2	59	\$377
MACQUARIE WAGYU C1678	BDWFC1678	1.6	71	4.1	64	8	67	3.8	64	-0.4	64	\$371

### Black Wagyu TOP 100 DAMS for Marble Score

ANIMAL NAME	ANIMAL ID	MARBLE SCORE		MARBLE FINENESS (%)		CARCASS WEIGHT		EYE MUSCLE AREA (SQ. CM)		RUMP FAT (MM)		FB TERM INDX
		EBV	Acc.	EBV	Acc.	EBV	Acc.	EBV	Acc.	EBV	Acc.	
MACQUARIE WAGYU C1674	BDWFC1674	1.6	69	4.1	63	7	64	4.2	62	-1.4	63	\$370
MACQUARIE WAGYU F D2000	BDWFD2000	1.6	61	4.1	54	6	55	2.8	53	-0.7	53	\$362
SAMURAI FARMS SUZUNAMI C501	SF FC0501	1.6	59	1.6	56	-5	58	0.2	53	-0.2	56	\$314
SAMURAI FARMS SUZUNAMI C531	SF FC0531	1.6	59	1.0	-56	16	57	-1.3	53	1.1	56	\$260
MACQUARIE WAGYU C1589	BDWFC1589	1.5	70	4.2	64	20	66	3.4	63	-0.3	64	\$409
MAYURA F Y0031	ADBFY0031	1.5	68	2.1	66	20	61	-0.8	59	1.3	60	\$406
MACQUARIE WAGYU F D2074	BDWFD2074	1.5	68	4.4	62	19	64	4.8	61	-0.4	62	\$401
MACQUARIE WAGYU E2338	BDWFE2338	1.5	67	4.3	62	17	63	4.7	61	0.1	62	\$393
MACQUARIE WAGYU F B1088	BDWFB1088	1.5	63	3.5	55	16	58	2.5	55	-1.1	53	\$389
MACQUARIE WAGYU Y403	BDWFY0403	1.5	77	2.8	66	16	73	0.8	69	-2.1	70	\$389
KURO KIN HIKOHIME 56	KKWFX0947	1.5	66	3.1	64	15	66	3.7	61	1.6	62	\$383
MACQUARIE WAGYU F D2124	BDWFD2124	1.5	68	4.9	64	15	63	4.1	61	0.2	62	\$382
SAMURAI FARMS AZUSA B164A (IMP USA)	SF FB164A	1.5	64	2.5	61	13	57	0.6	55	2.0	56	\$373
MACQUARIE WAGYU F D1980	BDWFD1980	1.5	67	3.3	62	12	65	4.8	62	-1.2	64	\$371
SANJOLINCEY F D250	JASFD0250	1.5	64	3.4	60	10	60	4.0	58	1.0	59	\$359
SAMURAI FARMS KINNTOU B293	SF FB0293	1.5	65	2.3	63	10	60	0.2	58	1.4	58	\$359
BALD RIDGE SAKAN B239	CCCFB0239	1.5	65	1.4	63	8	62	0.7	60	-0.2	60	\$351
MACQUARIE WAGYU Y501	BDWFY0501	1.5	74	3.0	66	-3	69	2.9	65	0.5	67	\$301
MACQUARIE WAGYU F A794	BDWFA0794	1.5	70	2.3	63	-4	68	3.7	62	2.1	66	\$299
MACQUARIE WAGYU F D2072	BDWFD2072	1.4	65	2.5	54	24	61	4.2	58	0.0	59	\$403
SHADAI FARM KENSEI C0006	SFWFC0006	1.4	66	1.5	64	22	61	-0.1	59	0.9	59	\$393
MACQUARIE WAGYU F B1048	BDWFB1048	1.4	71	1.6	63	16	67	1.2	64	-2.3	66	\$368
MACQUARIE WAGYU F Z736	BDWFZ0736	1.4	66	3.1	56	16	60	0.3	56	1.1	57	\$365
WAGYU GENETICS HIKOHIME D8346	WGWFD8346	1.4	67	1.0	64	15	61	2.2	55	1.6	56	\$363
SAMURAI FARMS CHIKAZUKI C415	SF FC0415	1.4	64	2.1	62	13	61	2.2	59	0.0	59	\$356
SAMURAI FARMS D146	SF FD0146	1.4	73	0.9	71	12	66	0.0	64	1.2	64	\$350
SAMURAI FARMS CHIYOTAKE C504	SF FC0504	1.4	64	3.3	63	11	61	4.2	59	-0.3	59	\$346
WAGYU GENETICS HIKOHIME D8396	WGWFD8396	1.4	68	2.5	65	11	64	1.8	61	1.2	61	\$344
SAMURAI FARMS AZUSA C050 (IMP USA)	SF FC0050	1.4	63	2.5	61	10	58	0.6	56	2.5	56	\$342
MACQUARIE WAGYU C1506	BDWFC1506	1.4	65	2.4	56	9	59	4.4	55	1.0	56	\$337
LONGFORD B8618	LFDFB8618	1.4	65	0.5	62	7	62	1.6	59	0.6	56	\$326
SAMURAI FARMS KINU C598	SF FC0598	1.4	66	4.2	64	5	61	3.7	59	0.3	59	\$319
GOSHU WAGYU F Z292	GOSFZ0292	1.4	64	1.2	62	3	63	2.2	60	1.1	62	\$305
SAMURAI FARMS F C124 (COM)	SF FC0124	1.4	60	0.8	58	2	58	1.0	54	0.8	55	\$304
MACQUARIE WAGYU C1382	BDWFC1382	1.4	67	1.5	62	-4	64	1.8	61	-2.5	63	\$275
ROSEVALE Y150	ROSFY0150	1.3	70	2.0	64	42	64	0.1	54	0.4	55	\$465
MACQUARIE WAGYU F B1089	BDWFB1089	1.3	64	1.1	57	25	59	2.3	56	-2.8	52	\$388
MACQUARIE WAGYU C1437	BDWFC1437	1.3	67	3.7	60	24	61	2.2	54	-2.6	55	\$384
YOKOZUNA TANI X396	YOKFX0396	1.3	72	4.2	68	21	68	0.6	63	1.1	55	\$368
MAYURA CHIYOTAKE Y218	ADBFY0218	1.3	66	1.5	64	20	61	0.8	58	0.9	58	\$364
WAGYU GENETICS HIKOHIME D8326	WGWFD8326	1.3	68	0.7	66	16	62	4.0	60	0.8	60	\$345
SAMURAI FARMS CHIKAZUKI C449	SF FC0449	1.3	64	1.8	62	15	61	1.3	59	1.6	59	\$342
SAMURAI FARMS KINTOU C083 (IMP USA)	SF FC0083	1.3	65	2.1	63	12	61	-1.0	58	1.8	59	\$328
SAMURAI FARMS CHIKAZUKI C430	SF FC0430	1.3	64	2.1	62	12	60	1.7	58	0.4	59	\$328
SAMURAI FARMS ITOCHIYO B284	SF FB0284	1.3	72	1.4	70	11	66	0.7	64	0.6	63	\$321
SAMURAI FARMS CHIKAZUKI C384	SF FC0384	1.3	59	1.8	58	10	56	1.7	55	0.7	56	\$318

## Black Wagyu TOP 100 DAMS for Marble Score

ANIMAL NAME	ANIMAL ID	MARBLE SCORE		MARBLE FINENESS (%)		CARCASE WEIGHT		EYE MUSCLE AREA (SQ. CM)		RUMP FAT (MM)		FB TERM INDX
		EBV	Acc.	EBV	Acc.	EBV	Acc.	EBV	Acc.	EBV	Acc.	
WAGYU GENETICS KENSEI D8364	WGWFD8364	1.3	66	1.8	64	10	61	4.7	59	1.9	59	\$316
SAMURAI FARMS CHIKAZUKI C446	SF FC0446	1.3	65	1.7	63	9	60	0.9	59	0.6	59	\$312
ROSEVALE Y142	ROSFY0142	1.3	64	1.4	60	7	60	0.3	54	1.1	55	\$305
GINJO KITAFUKU C887	GINFC0887	1.3	67	2.5	62	5	64	1.8	56	-1.1	56	\$296
MACQUARIE WAGYU C1571	BDWFC1571	1.3	70	3.9	63	5	64	0.3	61	1.7	62	\$295
SAMURAI FARMS CHIKAZUKI C389	SF FC0389	1.3	67	4.0	65	3	62	6.4	60	-1.1	60	\$285
MACQUARIE WAGYU C1200	BDWFC1200	1.3	70	3.7	63	1	65	1.3	59	2.8	59	\$278
MACQUARIE WAGYU E2402	BDWFE2402	1.3	66	3.7	61	-1	61	4.9	59	0.0	59	\$268
EXCEL SHIGE B0069	EXLFB0069	1.3	58	1.6	55	-2	57	3.0	51	-0.7	48	\$262
EXCEL SHIGE B0019	EXLFB0019	1.3	60	2.0	57	-4	57	3.7	52	-0.9	50	\$257
SAMURAI FARMS KINNTOU A55	SF FA0055	1.3	53	1.1	50	-8	56	-0.7	52	1.2	56	\$235
MACQUARIE WAGYU C1606	BDWFC1606	1.3	70	3.4	-65	10	65	5.6	60	3.0	63	\$225
WESTHOLME SHIRAKI	WESFX0414	1.2	71	1.2	61	31	76	3.0	67	-0.9	74	\$394
EXCEL KEIKI (IMP USA)	EXLFX1032	1.2	66	1.7	62	30	65	0.0	59	-1.2	57	\$388
EXCEL KITASAYOKO (IMP USA)	EXLFX1046	1.2	66	1.8	62	28	65	1.0	59	-1.1	57	\$381
SAMURAI FARMS DAI 2 KINNTOU C188	SF FC0188	1.2	69	2.3	67	21	64	-0.1	62	2.0	62	\$349
MACQUARIE WAGYU C1419	BDWFC1420	1.2	56	1.8	50	20	52	1.5	48	-2.6	49	\$342
MACQUARIE WAGYU E2218	BDWFE2218	1.2	70	3.6	64	20	66	4.4	63	-0.8	64	\$341
MAYURA TETUFUKU Y181	ADBFY0181	1.2	63	0.9	60	19	60	-0.1	58	1.7	58	\$340
SAMURAI FARMS KINNTOU B105	SF FB0105	1.2	70	0.9	68	19	64	0.8	62	0.9	62	\$339
MACQUARIE WAGYU F Z673	BDWFZ0673	1.2	71	1.1	65	18	68	2.3	65	1.6	65	\$333
KURO KIN HIKOHIME 69	KKWFZ0783	1.2	63	4.0	59	15	68	0.7	56	1.2	59	\$322
SAMURAI FARMS D100	SF FD0100	1.2	67	1.6	66	15	61	-1.8	60	1.9	60	\$322
WAGYU GENETICS HIKOHIME B0646	WGWFB0646	1.2	63	1.6	61	14	60	1.8	58	1.2	58	\$315
WAGYU GENETICS DAI 2 KINNTOU D8363	WGWFD8363	1.2	69	1.3	66	13	62	3.3	59	-0.2	60	\$312
MACQUARIE WAGYU F D1767	BDWFD1767	1.2	65	2.4	60	13	64	4.1	61	0.2	63	\$311
WAGYU GENETICS CHIYOTAKE D8224	WGWFD8224	1.2	67	2.8	65	12	61	4.0	59	0.7	59	\$308
MAYURA E176	ADBFE0176	1.2	66	2.7	64	12	62	3.7	61	-0.5	61	\$307
SAMURAI FARMS D134	SF FD0134	1.2	68	1.2	66	11	62	-1.3	60	2.0	60	\$304
MACQUARIE WAGYU F D2047	BDWFD2047	1.2	65	1.8	54	11	60	5.3	56	2.4	57	\$303
MACQUARIE WAGYU C1149	BDWFC1149	1.2	71	1.2	63	10	67	1.7	61	-3.4	66	\$296
WAGYU GENETICS DAI 2 KINNTOU D8378	WGWFD8378	1.2	66	1.9	64	10	62	6.8	59	0.0	60	\$296
SAMURAI FARMS OKAHANA C409	SF FC0409	1.2	70	0.0	69	9	64	0.9	62	1.2	62	\$295
MACQUARIE WAGYU C1639	BDWFC1639	1.2	72	3.1	65	8	67	4.1	65	-1.2	66	\$287
MACQUARIE WAGYU F D2106	BDWFD2106	1.2	69	3.7	64	5	64	4.4	62	1.0	63	\$276
MACQUARIE WAGYU E2386	BDWFE2386	1.2	68	4.3	63	5	63	4.3	61	0.4	62	\$273
EXCEL KATSUMI 7 NO1 (IMP USA)	EXLFW1028	1.2	61	2.7	58	4	65	1.9	56	-1.5	55	\$272
MACQUARIE WAGYU C1370	BDWFC1370	1.2	66	3.3	60	2	61	2.2	58	3.4	59	\$259
SAMURAI FARMS D001	SF FD0001	1.2	62	2.3	60	1	55	5.4	49	2.0	49	\$258
PASAGEAN MORITAKE U38-Y5007	7GHFY5007	1.2	69	1.0	65	1	73	1.4	64	-2.4	65	\$257
KURO KIN HIKOHIME 117	KKWFB0356	1.2	68	1.3	65	0	73	0.2	63	-1.3	71	\$252
SUMO NAMI W1347	SUMPW1347	1.2	62	0.7	60	-1	58	1.0	52	0.8	53	\$247
YANDRA NAMI Y064	YANFY0064	1.2	66	1.6	64	-1	61	-0.1	59	0.5	59	\$247
WESTHOLME HIMEFUKU	AACFB0321	1.2	66	2.3	-61	16	71	3.0	63	0.3	73	\$181

## Black Wagyu TOP 100 DAMS for Carcase Weight

ANIMAL NAME	ANIMAL ID	MARBLE SCORE		MARBLE FINENESS (%)		CARCASE WEIGHT		EYE MUSCLE AREA (SQ. CM)		RUMP FAT (MM)		FB TERM INDX
		EBV	Acc.	EBV	Acc.	EBV	Acc.	EBV	Acc.	EBV	Acc.	
SUMO TANI W0967	SUMFW0967	0.2	63	1.5	57	48	69	-2.5	54	1.1	55	\$250
SHADAI FARM DAI 2 KINNTOU C0054	SFWFC0054	0.4	55	-0.4	51	48	50	0.2	43	1.2	44	\$294
SUMO HANA U2029	SUMFU2029	-0.2	65	0.4	59	44	61	-3.0	54	-0.2	57	\$142
KURO KIN KENSEI 10	KKWFX0984	-1.3	69	-1.9	63	44	67	-1.8	56	1.4	61	-\$101
WESTHOLME MARIA	WESFX0030	-0.5	60	-3.1	52	44	76	1.6	67	1.0	76	\$74
ROSEVALE HANA W038	ROSFW0038	0.0	67	1.0	60	43	63	-2.1	50	0.3	52	\$184
PASAGEAN CHIYOTAKE T116-Y7291	7GHFY7291	-0.1	72	-0.3	69	43	73	-0.7	62	-1.4	65	\$160
MAYURA ITOCHIYOFUJI 7/3	ADBFV0038	-0.3	70	-1.1	66	43	62	-4.6	55	1.1	56	\$115
ROSEVALE Y150	ROSFY0150	1.3	70	2.0	64	42	64	0.1	54	0.4	55	\$465
YOKOZUNA HARUKI	YOKFT0001	0.1	64	0.8	59	42	66	-0.2	57	0.9	55	\$199
MACQUARIE WAGYU Y457	BDWFY0457	0.4	68	-0.6	58	41	67	1.4	63	-0.3	65	\$263
LISNAGARVEY F E0113	LISFE0113	0.1	65	1.0	57	40	63	0.1	59	2.1	61	\$192
SANJOLINCEY MAYBELLE	JASFY0007	-0.7	70	-1.7	66	40	64	-5.1	60	1.7	61	\$15
PASAGEAN HIKOKURA V171-Y7330	7GHFY7330	0.0	76	-2.2	72	39	76	-7.0	67	4.0	68	\$167
MACQUARIE WAGYU F A764	BDWFA0764	-0.6	68	-1.4	63	39	67	-3.6	62	0.3	65	\$35
MACQUARIE WAGYU F D1809	BDWFD1809	-0.8	68	-2.5	58	39	64	-0.8	61	-1.0	62	-\$10
MACQUARIE WAGYU F X358	BDWFX0358	0.7	78	1.9	65	39	76	-0.6	69	-0.8	71	\$319
SANJOLINCEY ANASTASIA	JASFY0002	0.3	61	1.3	55	38	60	-2.4	56	2.3	57	\$229
MACQUARIE WAGYU F Z631	BDWFZ0631	-0.1	70	-1.1	65	38	67	-0.6	64	2.1	65	\$141
WESTHOLME ITONAMITERU Y0345	WESFY0345	-0.6	60	-3.2	52	38	70	1.7	61	1.0	72	\$31
KURO KIN HIKOHIME 30	KKWFX0943	0.6	68	1.7	64	38	69	-1.0	60	1.3	63	\$294
MACQUARIE WAGYU F Z545	BDWFZ0545	-0.4	63	-2.2	60	38	60	-2.9	57	0.3	59	\$72
LONGBOW STARLIGHT	GKMFY0085	-0.4	59	0.0	54	38	58	-3.1	48	2.1	49	\$72
MAYURA ITOCHIYO V19	ADBFV0019	-0.6	76	-1.2	73	38	68	-3.8	65	0.8	65	\$28
MACQUARIE WAGYU F D1821	BDWFD1821	0.8	68	1.6	64	37	63	-1.5	60	0.0	61	\$334
MACQUARIE WAGYU C1358	BDWFC1358	0.7	65	1.6	55	37	63	-0.3	56	-0.2	61	\$312
KURO KIN HIKOHIME 19	KKFW0754	0.7	65	2.4	59	37	68	-1.7	58	1.7	64	\$312
MACQUARIE WAGYU F X297	BDWFX0297	0.6	69	0.3	60	37	72	2.0	64	-1.1	71	\$290
MACQUARIE WAGYU F Z561	BDWFZ0561	1.1	68	3.3	60	37	66	2.0	62	-1.1	64	\$398
MACQUARIE WAGYU F D2088	BDWFD2088	0.4	64	0.8	56	37	61	-2.3	58	-1.9	59	\$243
SHADAI FARM HIKOHIME C0077	SFWFC0077	0.4	66	2.9	63	36	61	0.0	58	0.0	58	\$242
WESTHOLME YUMISAKURA	WESFX0408	0.4	62	-0.8	58	36	71	1.6	65	-1.6	71	\$242
MACQUARIE WAGYU F W154	BDWFW0154	-0.3	65	-1.0	53	36	70	2.0	62	2.7	71	\$89
GINJO Z277	GINFZ0277	-0.1	67	-0.3	63	36	63	-3.8	56	1.3	55	\$132
LISNAGARVEY YAMARUKI	LISFZ0045	0.1	67	0.2	60	36	65	2.0	60	3.3	61	\$175
SANJOLINCEY ANNA	JASFE0017	0.6	57	1.5	50	36	50	4.7	47	0.6	47	\$284
WESTHOLME HIRA A0162	WESFA0162	0.3	62	-1.5	56	36	72	2.7	64	-0.7	72	\$219
SUMO MACHI W1877	SUMPW1877	0.9	61	1.9	59	36	57	-3.8	48	1.9	49	\$350
LONGBOW CALYPSO	GKMFU0046	0.3	58	0.7	54	36	57	0.0	47	1.4	50	\$217
SANJOLINCEY PAM	JASFC0019	-0.4	61	-2.0	55	36	61	-2.1	57	0.1	58	\$64
YURIYUHO J9613151 Y66 (IMP JAP)	IMJFRY066	0.1	54	-0.4	42	35	59	0.9	48	0.3	43	\$171
LISNAGARVEY F C056	LISFC0056	0.7	56	1.7	50	35	51	-0.4	47	2.1	48	\$301
KURO KIN HIKOHIME 59	KKWFZ0702	-0.2	75	-1.7	69	35	72	0.2	59	1.8	61	\$104
BENLEE DAI 2 KINNTOU W2203	BENFW2203	0.0	62	-1.1	55	35	62	0.9	57	-0.5	58	\$147
EXCEL ITOKANE	EXLFX1009	0.8	64	-0.4	60	34	63	0.9	59	-1.3	56	\$320
WESTHOLME ITO Z0333	WESFZ0333	-0.1	62	-2.4	55	34	64	2.2	59	-0.2	59	\$123
MACQUARIE WAGYU F D1697	BDWFD1697	0.0	63	-1.0	56	34	61	1.1	57	-1.7	57	\$143

## Black Wagyu TOP 100 DAMS for Carcase Weight

ANIMAL NAME	ANIMAL ID	MARBLE SCORE		MARBLE FINENESS (%)		CARCASE WEIGHT		EYE MUSCLE AREA (SQ. CM)		RUMP FAT (MM)		FB TERM INDX
		EBV	Acc.	EBV	Acc.	EBV	Acc.	EBV	Acc.	EBV	Acc.	
WESTHOLME HIRA Z0096	WESFZ0096	-0.1	62	-2.3	54	34	69	-0.9	58	-1.2	62	\$121
LISNAGARVEY F F0142	LISFF0142	-0.2	59	0.9	52	34	52	1.4	40	0.1	49	\$99
GEANCA F Y5014	7GHFY5014	-0.6	62	-4.3	58	33	62	0.4	58	-0.3	60	\$11
KURO KIN HIKOHIME 22	KKFW0764	0.2	68	3.1	65	33	65	-2.7	61	1.4	61	\$185
BALD RIDGE HAYAFUKU Z119	CCCFZ0119	-0.5	63	-1.7	60	33	69	5.2	63	0.4	67	\$32
MACQUARIE WAGYU D2030	BDWFD2030	1.1	66	2.7	56	33	60	1.2	56	-3.5	57	\$380
GINJO B911	GINFB0911	0.3	67	-1.4	60	33	65	-0.3	60	-0.5	53	\$206
KURO KIN HIKOHIME 18	KKFW0782	0.2	70	2.6	66	33	71	-0.3	59	1.1	64	\$184
YANDRA S NAMI Z019	YANFZ0019	0.4	59	0.9	53	33	54	0.7	51	0.4	51	\$227
MACQUARIE WAGYU F D2157	BDWFD2157	0.0	63	-2.0	54	33	61	2.8	58	-0.8	59	\$139
LONGBOW JEWEL STAR	GKMFY0088	-0.1	56	1.2	53	33	55	-2.6	42	2.3	42	\$118
KURO KIN HIKOHIME 51	KKWFX0995	0.5	70	3.2	62	33	67	-0.5	58	0.9	60	\$247
MACQUARIE WAGYU F D1950	BDWFD1950	0.2	61	0.1	51	33	57	-2.0	52	1.7	54	\$182
SHADAI FARM HIKOHIME A0250	SFWFA0250	-1.1	71	-2.7	68	32	63	-6.7	60	1.6	60	-\$102
YANDRA TANI Y042	YANFY0042	0.2	62	0.3	59	32	59	-2.0	56	1.7	57	\$181
LISNAGARVEY D091	LISFD0091	-0.2	69	-0.8	65	32	62	-4.9	60	1.2	60	\$94
ROSEVALE A039	ROSFA0039	0.1	64	1.4	54	32	56	-0.3	36	0.0	38	\$159
SANJOLINCEY CALAMITY	JASFZ0014	0.2	54	0.9	50	32	54	-0.5	49	0.7	51	\$180
WAGYU GENETICS HIKOHIME D8342	WGWFD8342	0.1	67	-0.2	65	32	61	-2.2	58	1.7	59	\$158
EXCEL MAYU (IMP USA)	EXLFV1105	1.1	66	1.8	62	32	64	0.7	59	-1.3	57	\$375
BALD RIDGE HAYAFUKU Z124	CCCFZ0124	-0.4	63	-1.1	60	32	61	2.8	57	0.8	58	\$48
SANJOLINCEY ANNIE-BELLE	JASFW0102	0.4	55	1.5	51	32	54	3.1	46	0.6	49	\$221
WAGYU GENETICS HIKOHIME D8356	WGWFD8356	-0.2	69	-1.4	67	31	62	-1.1	59	1.7	59	\$89
WESTHOLME SHIRAKI	WESFX0414	1.2	71	1.2	61	31	76	3.0	67	-0.9	74	\$394
WICKIUP DAI 2 KINNTOU W2253	3NOFW2253	0.6	66	2.4	61	31	64	0.6	59	1.6	60	\$263
GINJO A222	GINFA0222	-0.3	60	0.8	55	31	53	-1.6	47	0.7	41	\$67
MACQUARIE WAGYU F D1796	BDWFD1796	-0.6	69	-2.1	62	31	65	-1.2	61	-1.1	59	\$2
GINJO F W110	GINFW0110	0.4	67	3.1	61	31	67	1.8	60	0.3	56	\$219
GEANCA F A7042	7GHFA7042	0.2	68	-0.2	66	31	67	-4.5	60	1.0	62	\$175
MACQUARIE WAGYU F D1688	BDWFD1688	0.3	72	-0.1	63	31	66	-1.9	63	-1.2	63	\$197
GEANCA F B7237	7GHFB7237	-0.2	61	-2.4	57	31	63	1.7	58	0.1	59	\$87
SAMURAI FARMS D126	SF FD0126	-0.7	67	-1.9	64	31	60	-2.0	57	0.1	53	-\$22
GINJO Z284	GINFZ0284	0.6	69	0.0	65	31	66	-3.2	60	1.2	56	\$261
MACQUARIE WAGYU F D2077	BDWFD2077	0.2	64	0.3	54	31	62	0.7	58	-0.9	60	\$174
MACQUARIE WAGYU Y429	BDWFY0429	0.1	69	-1.4	62	31	68	1.8	64	-1.3	63	\$152
SHADAI FARM HIKOHIME C0062	SFWFC0062	0.0	66	2.0	63	31	61	-1.9	58	0.4	58	\$130
KURO KIN HIKOHIME 17	KKFW0780	0.1	59	0.6	56	31	63	-3.4	55	1.8	59	\$151
GINJO A819	GINFA0819	0.7	58	2.0	51	30	58	0.7	49	0.8	40	\$282
KURO KIN HIKOHIME 44	KKWFX0974	0.8	66	5.0	63	30	67	-0.4	57	1.2	59	\$303
MACQUARIE WAGYU F D2034	BDWFD2034	0.1	65	-1.4	58	30	62	1.5	59	1.6	60	\$151
SUMO TANI W950	SUMFW0950	-0.2	59	0.7	54	30	56	-0.8	52	0.8	54	\$84
SOUTHERN CROSS ITOSURI	SCWFD0048	0.6	64	2.0	61	30	61	-1.3	54	0.4	58	\$258
YANDRA TANI X164	YANFX0164	-0.7	70	-1.1	64	30	65	2.5	61	0.3	62	-\$25
YANDRA S NAMI Z023	YANFZ0023	0.8	65	0.1	60	30	59	-1.3	56	0.2	56	\$301
LISNAGARVEY F F0133	LISFF0133	-0.2	61	1.1	55	30	54	-1.9	48	0.0	51	\$84
EXCEL KEIKI (IMP USA)	EXLFX1032	1.2	66	1.7	62	30	65	0.0	59	-1.2	57	\$388
MAYURA KENSEI E646	ADBF0646	0.3	65	1.9	61	30	59	1.9	53	0.6	56	\$192

**Black Wagyu TOP 100 DAMS for Carcase Weight**

ANIMAL NAME	ANIMAL ID	MARBLE SCORE		MARBLE FINENESS (%)		CARCASE WEIGHT		EYE MUSCLE AREA (SQ. CM)		RUMP FAT (MM)		FB TERM INDX
		EBV	Acc.	EBV	Acc.	EBV	Acc.	EBV	Acc.	EBV	Acc.	
WAGYU GENETICS AIZAKURA B632	WGWF0632	-0.1	66	-0.6	62	30	62	-2.5	58	1.0	58	\$105
PASAGEAN CHIYOTAKE T116-Y7277	7GHFY7277	-0.5	73	-0.7	69	30	74	-3.6	63	0.6	66	\$18
LISNAGARVEY F A085	LISFA0085	0.0	69	0.0	64	30	63	-3.7	60	0.5	61	\$126
EXCEL MAYUMI (IMP USA)	EXLFV1139	0.9	66	1.8	62	30	65	0.1	59	-1.2	57	\$321
BENLEE HIKOHIME X234	BENFX0234	-0.1	66	-0.3	64	30	61	-2.5	59	1.3	59	\$104
KINTO FUJI X0239	KTOFX0239	-0.1	66	-0.3	64	30	61	-2.5	59	1.3	59	\$104
PEPPERMILL GROVE F D045	PMGFD0045	-0.5	68	-1.3	66	30	61	-2.1	59	2.3	59	\$17

**2013 BORN WAGYU CALVES - AVERAGE EBVs**

**1991 - 2011 BORN**

Gestation Length (days)	Birth Weight (kg)	200 Day Weight (kg)	400 Day Weight (kg)	600 Day Weight (kg)	Mature Cow Weight (kg)	Milk (kg)	Scrotal Size (cm)	Carcase Weight (kg)	Eye Musc Area (Sq. cm)	Rib Fat (mm)	Rump Fat (mm)	Retails Beef Yield (%)
+0.1	+0.9	+9	+13	+17	+17	+1	-0.1	+11	+1.2	+0.3	+0.5	+0.0

Marble Score	Marbling Fineness	Fullblood Terminal Index (\$)
+0.2	+0.02	+104



# AI Sires With Semen Available

The following bulls which are listed in this Wagyu Breeding Guide have semen available for purchase:

## Export Qualified Sires - Black Wagyu

SIRE NAME	SIRE ID	CONTACT NAME	AWA Mem Id	USA	CHINA	EU	CAN	RSA	BZL	NZ	LATIN AMERICA
Goorambat Terutani F146	GRSFF0146	Agrigene		Y	Y	N	Y	Y	N	Y	Maybe
Bimbi Itoshigefuji E0003	BIMFE0003	S. Oates	KSO	Y	y	Y	Y	Y	Maybe	Y	Maybe
Bimbi Michiyama	BIMFC0001	S. Oates	KSO	Y	y	Y	Y	Y	Maybe	Y	Maybe
Westholme Hirashigetamana	WESFA0107	AACo	AAC	Y	Y	Y	Y	Y	N	Y	N
Kitateruyasudoi J2810 HONGEN (IMP JAP)*	IMJFAJ2810	AACo	AAC	Y	N	N	Y	Y	Y	N	Y
Hirashigetayasu J2351 HONGEN (IMP JAP)*	IMJFAJ2351	AACo	AAC	Y	N	N	Y	Y	Y	N	Y
Itomoritaka J2703 HONGEN (IMP JAP)*	IMJFAJ2703	AACo	AAC	Y	N	N	Y	Y	Y	N	Y
Westholme SR Ash	AACFG1162	AACo	AAC	N	Y	N	N	N	N	N	N
Takeda Farm Fukutsuru 004	TFWFW0629	Takeda	TFW	Y	Y	N	Y	Y	N	Y	N
Lake Wagyu C087	KJDFC0087	K Dungey	KJD	Y	Y	Y	Y	Y	Maybe	Y	Maybe
Lake Wagyu C086	KJDFC0086	K Dungey	KJD	Y	Y	Y	Y	Y	Maybe	Y	Maybe
Moyhu F054	MOYFF0054	K. Dungey	KJD	Y	Y	Y	Y	Y	Maybe	Y	Maybe
Westholme Hirashigetayasu Z278	WESFZ0278	B Roberts Thompson	ARW	N	N	N	Y	Y	N	Y	N
Goshu Yasuzane	GOSFD0550	B Bejamin	GOS	Y	Y	Y	Y	Y	Y	Y	Y not Uruguay
Goshu Oyashima	GOSFD0558	C McGregor	SEV	Y	Y	N	N	N	N	Y	N
Seven Creeks F G939	SEVFG0939	C McGregor	SEV	Y	Y	N	N	N	N	Y	N
Echigo Farms Maifuku	ECHFA3001	T Suzuki	BMW		Y	N		Y		Y	
Peppermill Grove D139	PMGFD0139	Agrigene	PMG	N	Y	N	Y			Y	
Longford FE0241	LDFFE0241	ABS	LFD	Y	N	N	Y	Y	Y	Y	Y
Ginjo Marblemax B901	GINFB0901	M Buchanan	GIN	Y	N	N	Y	Y	Y	Y	Y
World K Michitsuru	WKSFU0006	World K	WKS	Y	N	Y					
World K Tokamasa	WKSFU0002	World K	WKS	Y	N	N					
World K Eikichi	PEDFU999	World K	WKS	Y	N	N					
World K Michishige	WKSFW0015	World K	WKS	Y	N	N					
World K Michitani	WKSFW0016	World K	WKS	Y	N	N					

## Export Qualified Sires - Red Wagyu

SIRE NAME	SIRE ID	CONTACT NAME	AWA Mem Id	USA	CHINA	EU	CAN	RSA	BZL	NZ	LATIN AMERICA
Kalanga Red Star 402	KALFC0402	R Hunter	CCC	Y	N		Y	Y	Y	Y	Y
Bald Ridge Henshin	CCC FH0037	R Hunter	CCC	Y	N		Y	Y	Y	Y	Y
Academy Red Wagyu Tambo H18	ARWFH0018	B Roberts Thompson	ARW	Y	N	N	Y	Y		Y	
Sumo Cattle Co Seisakushu C221	SMOFC0221	F Demaio	GBW	Y	Y	Y	Y	Y		Y	Y
ACC Master Chef	AACFE0146	B Roberts Thompson	ARW	N	N	N				Y	

\*Semen stored in USA. AACo does not export this sire from Australia or make embryos in Australia for export.

## Australian Domestic Qualified Sires

SIRE NAME	SIRE ID	CONTACT NAME	AWA Mem Id
CAPITAL COUNTRY WAGYU ICHIROU (AI)	PPWFJ0001	Capital Country Wagyu	PPW
GINJO MARBLEMAX HIRANAMI B901 (AI) (ET)	GINFB0901	Ginjo Wagyu	GIN
GOORAMBAT TERUTANI F146 (AI)	GRSFF0146	Goorambat Wagyu	GRS
IRONGATE WAGYU ITOSHIGENAMI B0006 (AI)	IGWFB0006	Irongate Wagyu	IGW
IRONGATE WAGYU NOMBY ICHIRYUNO C016	IGWFC0016	Irongate Wagyu	IGW
KIKUTSURUDOI TF146 (IMP USA)	IMUFRTF146	Willy Wagyu	WPC
KIKUYASU 400 (IMP JAP)	IMUFM2100	Willy Wagyu	WPC
LAKE WAGYU C087 (AI) (ET)	KJDFC0087	Lake Wagyu	KJD
LONGFORD 004 (AI) (ET)	LFDFY0004	The Wright Wagyu	HPC
MOYHU F054 (AI)	MOYFF0054	Lake Wagyu	KJD
PEPPERMILL GROVE D139 (AI) (ET)	PMGFD0139	Goorambat Wagyu	GRS
SUMO CATTLE CO BIG AL E211 (AI) (ET)	SMOFE0211	Academy Red Wagyu	ARW
SUMO CATTLE CO SEISAKUSHU C221 (AI) (ET)	SMOFC0221	Gabni Wagyu	GBW
THE WRIGHT WAGYU MASTER CHEF E146 (AI) (ET)	ACCFE0146	Academy Red Wagyu	ARW
WESTHOLME HIRASHIGETAYASU Z278 (AI)	WESFZ0278	Academy Red Wagyu	ARW
BAR R SANJIRO 4P (IMP USA) (AI)	IMUFY5663	Willy Wagyu	WPC
TWA ICHIRYUNO (IMP USA) (ET)	TWAFR0003	Willy Wagyu	WPC
ZTR MICHISATO (AI)	ZTRFT0047	Willy Wagyu	WPC

A full list of AI sires is available at [www.wagyu.org.au](http://www.wagyu.org.au) - Sale Catalogues - Semen Catalogues. As more Wagyu bulls are collected with semen available for sale please advise the Australian Wagyu Association to list them on the website.

# How to Use the New Wagyu Carcass EBVs & Fullblood Terminal Index to Breed for Commercial Production Targets

## Example 1: Mating decision to achieve 470kg carcasses while maximising AUS-MEAT Marble Score.

Macquarie Wagyu (BDW) is used for this worked example and their assistance is appreciated.

### Step 1

Select the best **females** from within the herd by using the Animal Search - EBV Enquiry search facility on the AWA website [www.wagyu.org.au](http://www.wagyu.org.au) inserting the criteria: Current Owner Identifier is BDW, Select If – Animal is Female, minimum Carcass Weight EBV of 0 and minimum Marble Score EBV of 0. Sort on Fullblood Terminal Index. This will list the top candidate females.

### Step 2

Select the best **sires** from within the herd by using the EBV Enquiry search facility on the web using the criteria: Current Owner Identifier is BDW, animal is a sire, minimum Carcass Weight EBV of 0 and minimum Marble Score EBV of 0. Sort on Fullblood Terminal Index. This will list the top candidate sires owned by this herd. Also list any AI sires available to the herd using the same criteria.

### Step 3

Check for inbreeding levels using the Mating Predictor. A maximum of 10 percent inbreeding is acceptable in most breeding programs.

### Step 4

Mate one or more of the sires to the selected females ensuring that inbreeding levels are not above 10%

## Example 2: Mating decision to achieve a very finely marbled 400kg Fullblood Carcass with a maximum of carcasses achieving an AUS-MEAT Marble Score of 9+

Mayura Station (ADB) is used for this worked example and their assistance is appreciated.

### Step 1

Select the best **females** from within the herd by using the EBV search facility on the web using the criteria: Current Owner Identifier is ADB, animal is a female, minimum Marbling Fineness of 2.0, minimum Marbling Score EBV of 1.0 and minimum Carcass Weight EBV of

0. Sort on Marbling Fineness EBV. This will list the top candidate females.

### Step 2

Select the best **sires** from within the herd by using the EBV search facility on the web using the criteria: Current Owner Identifier is ADB, animal is a sire, minimum Marbling Fineness of 2.0, minimum Marbling Score EBV of 1.0 and minimum Carcass Weight EBV of 0. Sort on Marbling Fineness EBV. This will list the top candidate sires owned by this herd. Also list any AI sires that are available to the herd using the same criteria.

### Step 3

Check for inbreeding levels using the Mating Predictor. A maximum of 10 percent inbreeding is acceptable in most breeding programs.

### Step 4

Mate one or more of the top sires to the selected females ensuring that inbreeding levels are not above 10 percent

## Example 3: Selecting a sires for breeding Crossbred Wagyu F1 50% calves from Angus females and achieving 450kg carcasses while maximising AUS-MEAT Marble Score.

Westholme Wagyu (AAC) is used for this worked example and their assistance is appreciated.

### Step 1

Select the best **sires** from within the herd by using the EBV search facility on the web using the criteria: Current Owner Identifier is AAC, animal is a sire, minimum Marbling Score EBV of 0 and minimum Carcass Weight EBV of -10. Sort on Fullblood Terminal Index. This will list the top candidate sires.

### Notes

1. The new carcass EBVs and Fullblood Terminal Index are available only for sires which have had carcass data submitted on progeny or grand progeny and the accuracy of the new EBVs is greater than 30%. Members will need to check which sires are available by AI from the AI sire list in this Wagyu Breeding Guide or from the Semen Catalogue on the website.
2. The new carcass EBVs and Fullblood Terminal Index are available only for dams which have had carcass data submitted on progeny or grand progeny and the accuracy of the new EBVs is greater than 30%.

# Major Wagyu Prefectural Bloodlines

There are five traditional Japanese Black prefectural bloodlines, and one modern strain, of which at most four are represented in Australia, although formal local measurement of strain representation has not been undertaken. Combinations of all lines are used for fullblood meat production.

## HYOGO PREFECTURE:

This is the home of Kobe Beef. The most common and well known Hyogo sub-strain in Australia is Tajima, but Kumanami is represented in the sire Itoshigenami, also frequently described as Tajima outside Japan. Hyogo or Tajima cattle are generally smaller framed with slower growth rates, but excellent meat quality. They are considered ideal outcross sires in the production of Crossbred Wagyu F1 50% feeder cattle. This is the most commoditised strain of Black Wagyu both in Australia and Japan. Careful infusion of Hyogo genetics is generally regarded as essential in the efficient production of the best quality Wagyu beef. Due to high levels of inbreeding, care is needed in joining Hyogo cattle within the same prefectural strain.

## ITOZAKURA LINE:

The second most common grouping in Australia, this is a modern bloodline founded on the famous sire Dai 7 Itozakura, combining Hyogo and Okayama prefectural genetics (in Shimane Prefecture). Many seedstock of Takeda Farm breeding fall within this grouping and the founding sire is prominent in many Australian pedigrees. Kitaguni 7/8 is a sire example. The line is sometimes mis-described as Fujiyoshi, which is an Okayama prefecture line represented here by TF Mitsuhiokura.

## SHIMANE PREFECTURE:

Probable third highest local representation, also often described as Fujiyoshi, this lightly represented group consists of medium framed cattle with good maternal qualities, growth rates and meat quality. TF39 Kinto is a sire example with about 46% Shimane.

## TOTTORI PREFECTURE:

This prefecture is lightly represented in Australia through the Westholme fullblood herd. The two main strains are Kedaka and Eikou. Tottori supplied the dominant strains in Japanese Wagyu production during the 1960-1980s, with larger animals featuring straight, strong back lines, good growth rates, superior maternal ability and high yielding, high quality carcasses. It remains the second most influential strain in Japanese breeding. Itomoritaka, Hirashigetayasu and Shigefuku are local sire examples, with dam examples in the Westholme group.

## JAPANESE BROWN:

Known as 'red' lines (Akaushi), Kochi and Kumamoto in Australia, have been strongly influenced by Korean and European breeds, particularly Simmental.



*Michifuku - Tajima strain*



*TF Mitsuhiokura - Okayama prefecture line*

# Our Key Technology Partner in the Creation of New Generation Wagyu Genetic Analysis

In undertaking complex scientific programs such as the Wagyu Collaborative Genetics Research Project, the Australian Wagyu Association is dependent for advice and contractual implementation on globally recognised expert service providers. In this case, our internationally acclaimed partner is the Animal Genetics and Breeding Unit (AGBU) at the University of New England, Armidale, NSW. Following is some of the AGBU story....

## The AGBU Story

The Animal Genetics and Breeding Unit was established in 1976 by the New South Wales State Department of Agriculture and the University of New England to carry out research, development and training in the genetic improvement of livestock for the benefit of Australian agriculture. From a small beginning of two scientists, one extension specialist and one secretary, under the leadership of Dr Keith Hammond it has grown to a team of 20 scientists, postgraduate students and support staff. It has an excellent international reputation and as a consequence, an active program of visiting scientists. The Director of AGBU is Dr Robert Banks.



## AGBU's achievements include:

- BREEDPLAN, PIGBLUP and OVIS genetic evaluation systems which have been widely adopted by the beef, pig and sheep industries, respectively;
- BreedObject Software to calculate economic weights and selection indices tailored to individual requirements;
- Recognition as a leader in methods for the prediction of breeding values through these genetic evaluation systems;
- Major contributions to the Beef CRC programs;
- New knowledge of the genetics of growth, carcass and fertility traits in beef cattle and pigs;
- New methods for the estimation of genetic parameters;
- New methods for segregation analysis with and without genetic markers;
- Regular short courses for students and scientists in work related areas.

These achievements have been made possible by grants from all major livestock R&D funding bodies in particular Meat & Livestock Australia and Australian Pork Limited and the ongoing support of UNE and NSW Department of Primary Industries.

AGBU's work has greatly assisted the improvement of livestock through breeding in Australia and overseas. A vibrant scientific program continues with regular publication of research results in Scientific Journals. However, its main purpose is to meet ongoing demand from Australia's livestock industry for research, development and training in genetics.



# Membership Delivers Real Value

The Australian Wagyu Association aims to deliver tangible commercial value to all its members. Become a member through [www.wagyu.org.au](http://www.wagyu.org.au) – Membership.

## Full Membership

Designed to be the highest membership category, offering all benefits provided by the association. These members are focused on highest quality seedstock cattle breeding and commercial beef production. They register their Wagyu Fullblood and Purebred cattle in the Wagyu Herdbook. They may also register Wagyu related cattle in the Wagyu Crossbred Register for grading up purposes or live export; and the Wagyu Commercial Register for slaughter cattle.

Registration of Wagyu cattle is not mandatory but adds very considerable value to those cattle.

COST: \$275 pa (inc GST) or A\$400 for overseas members.

### Full Member Benefits Include:

#### Genetic improvement

- Participation in Wagyu BREEDPLAN (no additional cost for BREEDPLAN enrolment and performance data input)
- Discounted fees for DNA typing, parent verification, and genetic condition testing at the University of Queensland Animal Genetics Laboratory
- Participation in GenProb recessive genetic analysis
- Specialised reports through the members' only area on the AWA website
- Participation in research and development projects.

#### Marketing

- Recording Wagyu and Crossbred Wagyu cattle and their performance data in the Herd Book. Crossbred and Wagyu Commercial Registers maintained by the association provides very significant commercial value.
- Export certification of semen and embryos (service fee of \$75/animal)

- Minimum 20% discounted member rates for advertising in The Australian Wagyu Update. Assuming a full page advertisement at a member rate of \$665 saves \$242
- Advertising in the AWA website with a link from the AWA website to a member's website. Assuming a one year advertisement at a member rate of \$730 saves \$146
- Advertising through the AWA member email network. Assuming one advertisement per year at a member rate of \$165 saves \$33
- Advertising in the AWA Wagyu eNews. Assuming a one year advertisement at a member rate of \$1100 saves \$220

#### Herdbook registration (parent verified)

- The Herdbook is recognised internationally, enabling both domestic and export marketing of Herdbook registered livestock and their semen and embryos
- Herdbook dam premium (300+%). Estimated by the commercial value of Wagyu females being in the order of \$1000. Their Herdbook value is in the order of \$3000+
- Herdbook bull premium (190+%). Estimated by non-registered Wagyu bulls at 12 months of age valued in the order of \$1750 (meat value: \$5.00 \* 350kg = \$1750), while their Herdbook bull value is in the order of \$5000+

#### Wagyu commercial registered (non parent verified)

- Commercially registered steer or female premium (10%). Estimated by non-registered Wagyu steers 12 months of age being valued at \$1575 (meat value \$4.50 \* 350kg live = \$1575), while Commercial Registered value is in the order of \$1750 (meat value \$5.00 \* 350kg live = \$1750)
- Export certification of live animals through ILRIC/ACGEA (service fee of \$25/head applies). 50% premium for Crossbred Wagyu (estimated by Angus heifers 300kg \$600 each, Crossbred Wagyu F1 50% 300kg \$950), 130% premium for Fullblood/Purebred (estimated by Angus heifers 300kg \$600 each, Wagyu Fullblood 100% 300kg \$1400+)

## Information

- The AWA's official publication The Australian Wagyu Update distributed three times per year. Value: total \$45 ie \$15 per issue including postage \*3 issues pa

## Education

- Minimum 20% discounted member rates to events hosted by association.
- National conference early bird \$495 for members, \$650 for non-members. Value \$155

### Total estimated value of Full Membership (estimated minimum)

Advertising value (one full page advertisement)	\$242
Information (Wagyu Update)	\$45
Education (Wagyu Conference attendance)	\$155
Education (Wagyu Performance Field Day attendance)	\$20
<hr/>	
	\$462

### Benefit: Cost

For a cost of \$275 Full Membership delivers a minimum of \$462, or a benefit to cost ratio of 1.7 : 1. However, the real value of full membership is derived from utilising the cattle registration services:

- Animal value (assuming ownership and registration of one Herdbook registered cow and bull pa each registered at \$28.60) \$1175

So, for a cost of \$275 full membership with cattle registration delivers a minimum of \$1600, or a benefit to cost ratio of 6.4 : 1.

***Full membership of the Australian Wagyu Association pays for itself at least six times over!***

## Associate Membership

Associate Membership is designed to attract those interested in the Australian Wagyu industry from all sectors of the value chain but who do not breed cattle. Marketing opportunities, information and education are provided for the Wagyu industry to enhance their businesses.

COST: \$66 pa (inc GST) or A\$60 for overseas members.

### Benefits Include:

- All marketing and information benefits provided to full members are available to associate members.

***Associate membership of the Australian Wagyu Association pays for itself at least five times over!***





The Australian Wagyu Association

University of New England

Armidale, NSW Australia, 2351

**T:** 02 6773 3138

**E:** [office@wagyu.org.au](mailto:office@wagyu.org.au)

**W:** [www.wagyu.org.au](http://www.wagyu.org.au)